

THE WORLD OF CRANE COMPONENTS



OLYMP

NEW!
WHEEL BLOCK WITH
SPINED HUB.
FULLY
INTERCHANGEABLE

AVAILABLE FOR
ORDER FROM
01/04/2025!

WHEEL BLOCK SYSTEM

ORS 250 - ORS 315

 ALWAYS SAFE. ALWAYS THE FIRST CHOICE.



OLYMP
WHEEL BLOCK SYSTEM

OLYMP

THE WHEEL BLOCK WITH SPLINED HUB.

KARL GEORG wheel blocks shoulder GIANTS

Crane system, roof construction or stadium turf;
fast or slow; Cleanroom or extremely harsh environment.

WHEEL BLOCK SYSTEM OLYMP

Optimally graduated sizes in a modular system, compact dimensions,
fast and economical, ready to install, with a load capacity up to 22,000 kg.
All components and interfaces are perfectly coordinated.

THE "OLYMP" AMONG WHEEL BLOCKS

With our latest wheel block variant, we are once again setting new standards. As the first production-series wheel block with internal gearing from Karl Georg, it features a modern, modular, and ready-to-install design—perfectly tailored to the highest demands. Thanks to precision-machined mounting surfaces on all sides, it ensures an accurate and effortless installation.

Behind this innovative product stands Karl Georg, a German family-owned company with over 100 years of tradition. With our state-of-the-art manufacturing "Made in Germany" and a team of experienced experts, we deliver top-quality solutions to more than 3,000 satisfied customers worldwide.

Our Promise: We understand our customers, listen carefully, and develop the best solutions together—reliable, customer-focused, and perfectly tailored for crane construction, industry, and plant engineering.

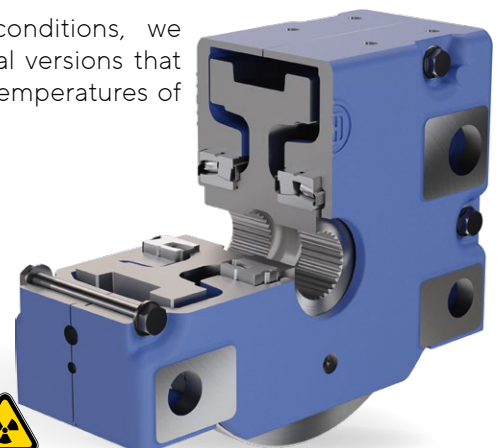
UNCOMPROMISING QUALITY

Designed for the highest loads, we deliberately use dynamically high-load-resistant spheroidal graphite cast iron and consciously avoid tapered roller bearings. For us, quality means maximum stability and long service life.

Our wheel blocks stand out with robust, lifetime-lubricated premium spherical roller bearings that effortlessly handle extreme wheel loads, operating reliably in ambient temperatures from -30 °C to +120 °C as standard.

For added safety and extended service life, relubrication is a standard feature. A factory-installed lubrication point allows for easy manual relubrication at any time or connection to a central lubrication system. The **OLYMP** wheel block system is ideal for demanding environments with dust, heat, or moisture.

For extreme conditions, we also offer special versions that can withstand temperatures of up to +200 °C.

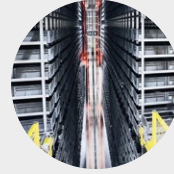




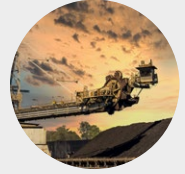
AUTOMOTIVE
Automotive engineering, autonomous driving and subcontracting



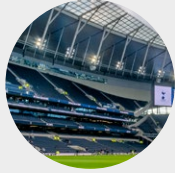
ENERGY SECTOR
Wind power, solar power, hydropower, geothermal power and biomass



PLANT ENGINEERING
Process engineering, power engineering, supply engineering and production engineering, etc.



MINING
Exploration, extraction and movement of mineral resources



ENTERTAINMENT
Commercial roofs, stage technology, stadium turf etc.



CONVEYOR SYSTEMS
Upstream/downstream, onshore/offshore production, LNG/H² transport



SMELTING WORKS
Steel production, metal production and processing



CRANE ENGINEERING
Industrial cranes, process cranes, container handling

AT A GLANCE



FULLY INTERCHANGEABLE



-30 °C TO +200 °C



UP TO 40 TONS



HIGH AVAILABILITY



SIMPLE INSTALLATION



FLEXIBLE DRIVE SELECTION

FREEDOM OF CHOICE FOR THE DRIVE

We offer flexible solutions. For the driven wheel block with either a single or central drive, connection solutions are available for flat and bevel gear motors from the modular systems of all manufacturers. With us, you choose your drive and are free to select the drive manufacturer, as our drive shafts are designed for gearboxes of all brands. For more information on drives, please refer to **page 6**.

For central drive systems with two wheel blocks, gearboxes, couplings, and connecting shafts, we supply all necessary components at short notice – for smooth and rapid deployment.

COMPREHENSIVE SERVICE

From the initial planning phase to final commissioning – we at Karl Georg are always by your side. Benefit from our high availability: All series components are in stock, waiting times are minimal, and selection is straightforward. We deliver any desired color shade and ensure that the wear part, the wheel, can be quickly and cost-effectively replaced with standard tools.

FLEXIBILITY & COMPATIBILITY

Our wheel blocks offer maximum connection versatility: whether head, side, or bolted connection – all standard connections are possible. Fit holes and precise mounting surfaces are already prepared as standard. Additionally, external dimensions and connection holes are compatible with comparable brands.



OLYMP WHEEL BLOCK WITH CELLULAR BUFFER

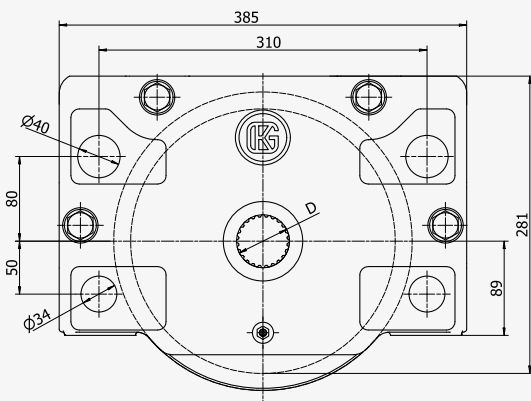
WHEEL BLOCK SYSTEM OLYMP

from 250 mm – 315 mm; up to 22 t

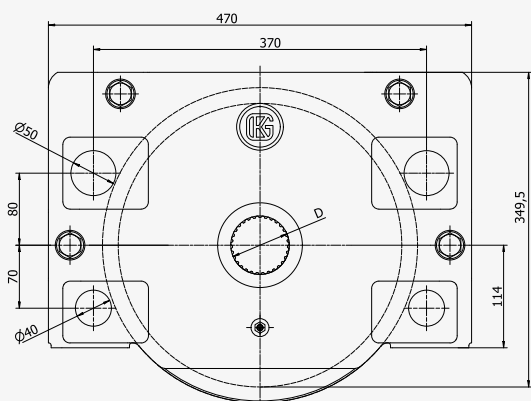
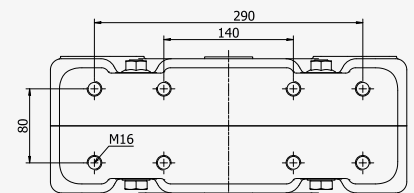
Wheel block type	Wheel material, max. wheel load in kg				Wheel block housing EN-GJS-400-15	Lubricated for standard service life		Anschlussvariante **			Weight kg
	EN-GJS-700-2	42CrMo4+QT	PA 12 G*	Polyurethane, Vulkollan®*		Self-aligning roller bearing	Relubrication	Head-	Bolted-	Side-	
250	16.000	16.000	5.500	2.700	X	X	X	X	X	X	65
315	22.000	22.000	8.000	4.000	X	X	X	X	X	X	120
400	Size to follow	Size to follow	Size to follow	Size to follow	X	X	X	X	X	X	Size to follow
500	Size to follow	Size to follow	Size to follow	Size to follow	X	X	X	X	X	X	Size to follow

* wheel diameters deviating from nominal size ** see page 5

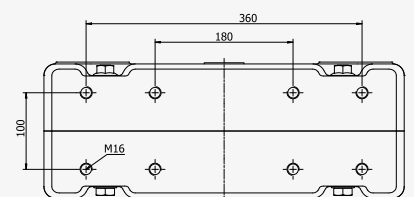
SIZES AND DIMENSIONS



ORS 250



ORS 315



CONNECTION VARIANTS

The **OLYMP** System offers a wide variety of connection options



HEAD CONNECTION



BOLTED CONNECTION



SIDE CONNECTION



WHEEL MATERIAL:

Spheroidal graphite cast iron
(EN-GJS-700-2)

ALTERNATIVELY:

Solid material or binding

- 42CrMo4+QT / 34CrNiMo6+QT
- Stainless Steel
- Polyamide PA 12 G
- Vulkollan®
- Other materials on request

Further information and technical details can be found in our **OLYMP** catalog at karl-georg.de:

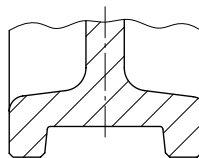


RUNNING SURFACES AND GROOVES

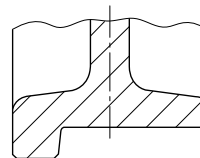
We offer a wide range of wheel tread options, perfectly matched to the respective rail. Our running surface geometries are precisely tailored to your application, ensuring safe and low-wear guidance.

For curve travel, we provide special designs that guarantee precise tracking even under demanding conditions. Depending on the application, you can choose from high-quality Vulkollan® or PA 12 G wheels – ideal for stacker cranes and high-bay warehouses.

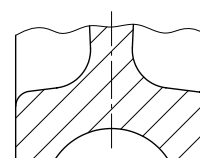
Take advantage of our expertise – we are happy to provide personalized advice!



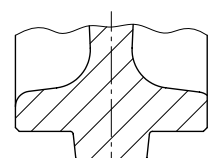
two-sided wheel flange



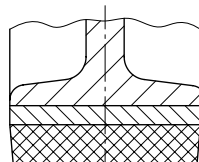
one-sided wheel flange



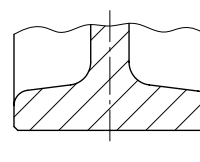
with concave groove



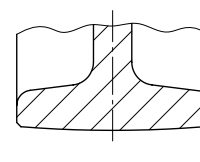
with middle wheel flange



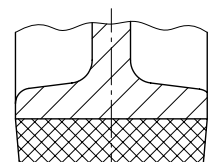
with binding of Vulkollan® with steel ring



no wheel flanges with cylindrical running surface



no wheel flanges with spherical running surface



with coating of Vulkollan® or PA 12 G

CUSTOMIZED DRIVE SOLUTIONS

THE CHOICE IS YOURS!

Our drive shafts for single or central drives are made from high-quality 42CrMo4+QT and precisely tailored to your requirements. Whether with a spline profile according to DIN 5480, a keyway according to DIN 6885-1, or designed for a shrink disk connection – we provide precise solutions for all flat and bevel gear motors with hollow shafts, regardless of the drive manufacturer.

CUSTOMIZED SOLUTIONS

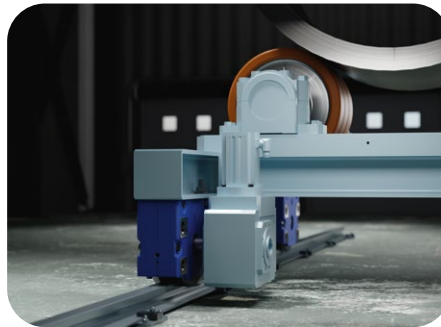
Our driven wheel blocks can be combined with a drive shaft – but we go even further. For alternative gearbox

connections, we manufacture the hub with a keyway connection according to DIN 6885-1 upon request.

Our goal: the best economic and technical solution for you. Whether a cus-

tom adaptation or the replacement of competitor products.

We are happy to advise you and find the optimal solution for your drive.



DRIVE SHAFTS SUITABLE FOR THE FOLLOWING TRANSMISSION MANUFACTURERS:

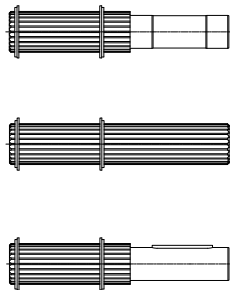
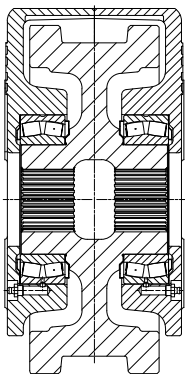
ABB SIEMENS · ABM GREIFFENBERGER
BONFIGLIOLI · DEMAG · FLENDER
NORD · SEW · STAHL CRANESYSTEMS
STEPHAN

DRIVE SHAFTS SUITABLE FOR SLIP-ON GEAR MECHANISMS FROM OTHER MANUFACTURERS ON REQUEST.

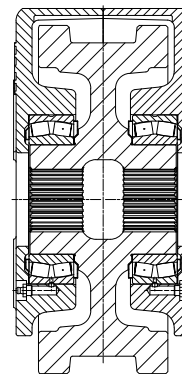
SINGLE DRIVE UNIT

SHAFT VARIANTS

INTERNAL SPLINE PROFILE

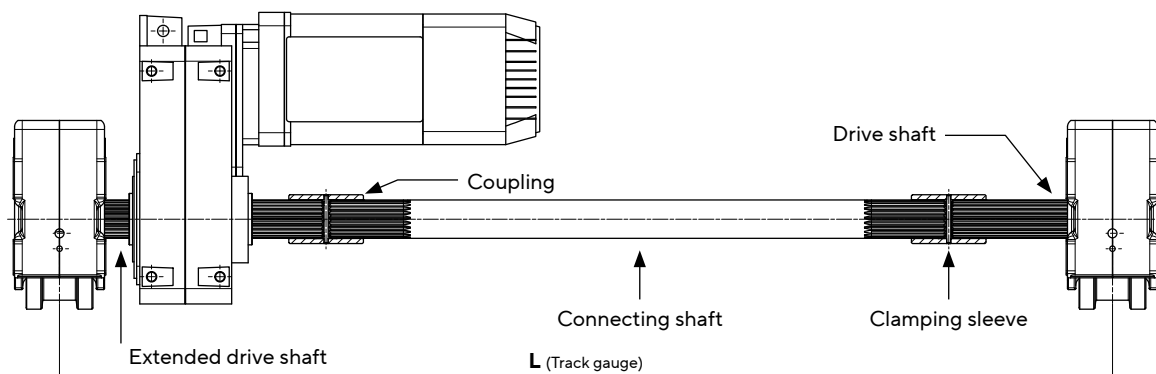


- Suitable for shrink disc
- with spline in accordance to DIN 5480
- with feather key as per DIN 6885-1



Wheel block size	Internal spline profile DIN 5480 to
250	- N50 - N65
315	- N65 - N75

CENTRAL DRIVE UNIT



On the gearbox side, versions with shrink disk and feather key for central drives are possible.

XTREM WE PUSH BOUNDRIES

Thanks to its decades of experience, Karl Georg can offer you a wide range of specific product solutions for particular applications, conditions and interfaces.

Thanks to flexible manufacturing concepts and a high level of vertical integration, we are able to offer customised solutions from a minimum order quantity of just 1 item

We would be happy to assist you with your project specifications.

- Steel, stainless steel, non-ferrous metals and plastics
- Forged or cast wheels
- Special contours and interfaces
- Running surface hardness up to 54 HRc, 20 mm deep
- Temperature down to -30 °C
- Temperature up to +200 °C
- Indoor, outdoor and offshore
- Corrosion protection C1 – C5M acc. to DIN EN ISO 12944



ALL STANDARD CRANE WHEEL MATERIALS, SOLID MATERIALS AND COMPOSITE SOLUTIONS.

PERFECTLY TAILORED ATTACHMENTS AND ACCESSORIES



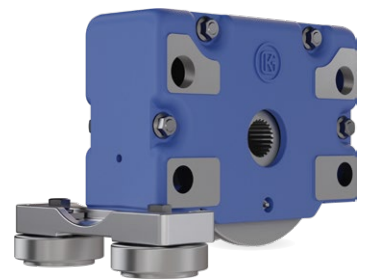
**CELLULAR PLASTIC BUFFER FOR WHEEL BLOCK
ORS 250 – 315**

Our buffers, made of cellular plastic or rubber, are perfectly tailored to the wheel block and the environmental conditions. They reduce impact loads, safely convert the active energies and can therefore protect your system and components.



HORIZONTAL ROLLER GUIDE ORS

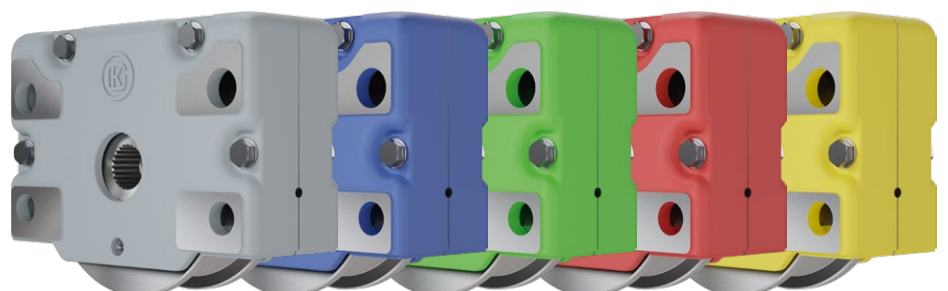
From our toolkit. "Heavy-duty" roller guide, modular and optimally tailored to the wheel block, for the safe absorption and transfer of horizontal forces

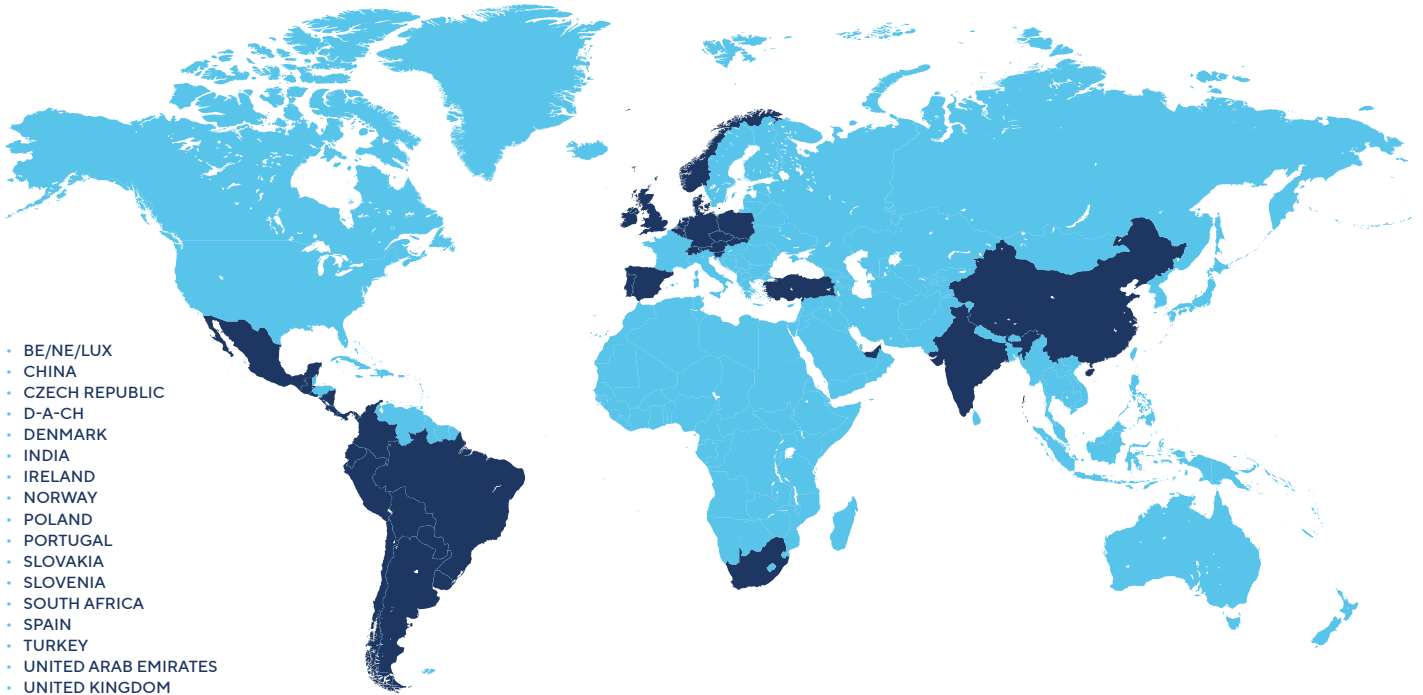


TAILORED ACCENTS AND CORROSION PROTECTION AS NEEDED

COATING AS DESIRED

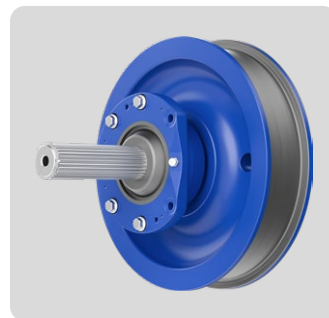
Our standard RAL paints are stable in stock. We fulfill special colour requests individually by mixing the desired shades ourselves - even from batch size 1.





- BE/NE/LUX
- CHINA
- CZECH REPUBLIC
- D-A-CH
- DENMARK
- INDIA
- IRELAND
- NORWAY
- POLAND
- PORTUGAL
- SLOVAKIA
- SLOVENIA
- SOUTH AFRICA
- SPAIN
- TURKEY
- UNITED ARAB EMIRATES
- UNITED KINGDOM

MORE INFORMATION



FOR MORE INFORMATION, PLEASE VISIT OUR WEBSITE AT KARL-GEORG.DE



KARL GEORG GMBH
Karl-Georg-Straße 3
D-57612 Ingelbach-Bahnhof
T: +49 (0)2688 / 95 16 - 0

info@karl-georg.de
www.karl-georg.de

WE ARE CERTIFIED
TO DIN ISO 9001
AND ISO 14001.



Changes and errors excepted.
© 2025 Karl Georg GmbH