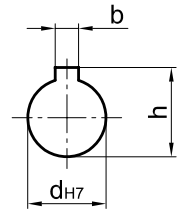
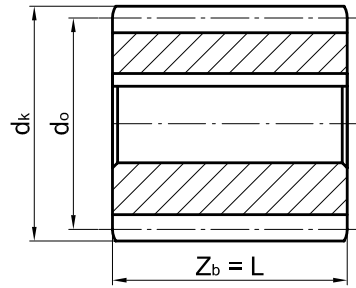
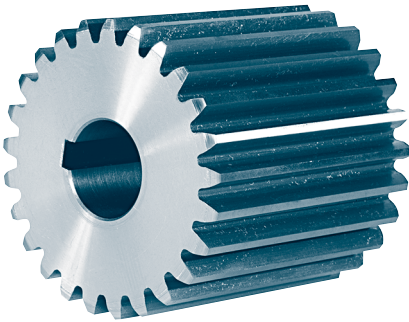


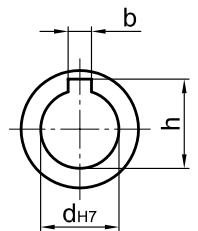
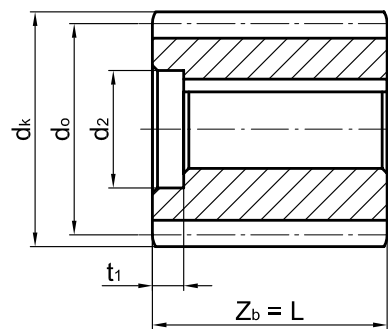
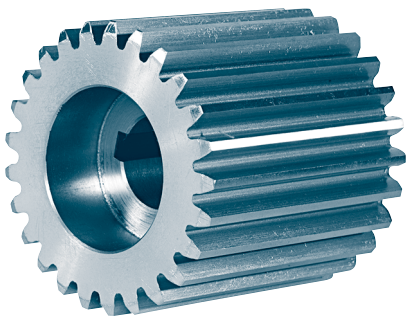
Pinions

KG 010.5

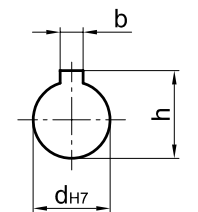
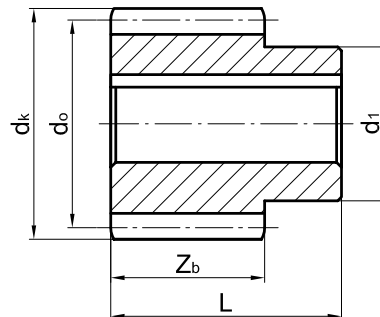
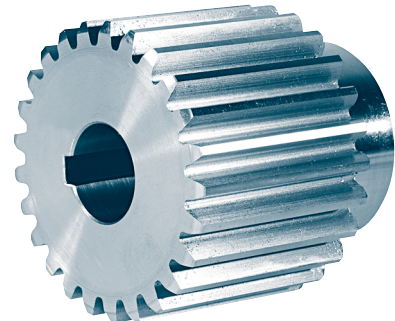
Form 1



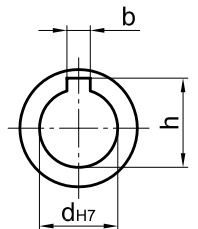
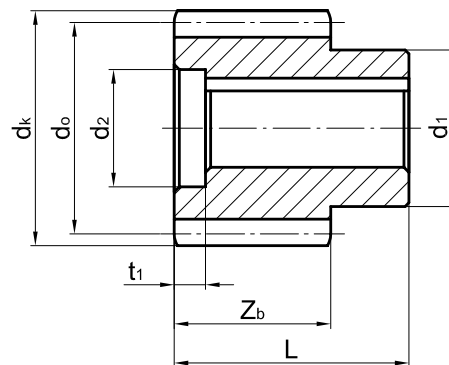
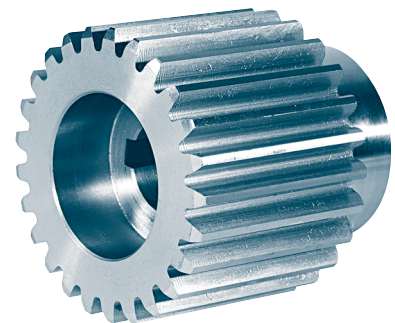
Form 2



Form 3



Form 4



Designation of a pinion form 1, module 3, number of teeth 18, length L = 60 mm, bore-Ø d = 20 H7 with feather keyway according to DIN 6885-1:

Module: 2-15
Minimum number of teeth: 12
 $d_{min} =$ 16 H7
Material: C45 or 42CrMo4+QT

Pinions 3 × 18 × 60 × 20 H7 KG 10.5 form 1

All dimensions and material to be stated with order.