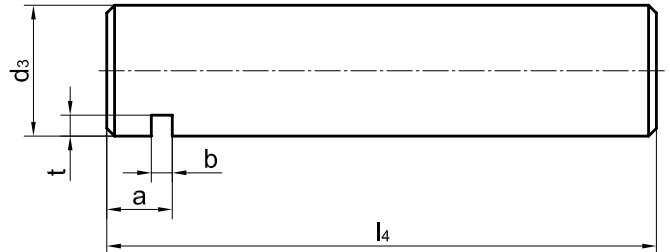
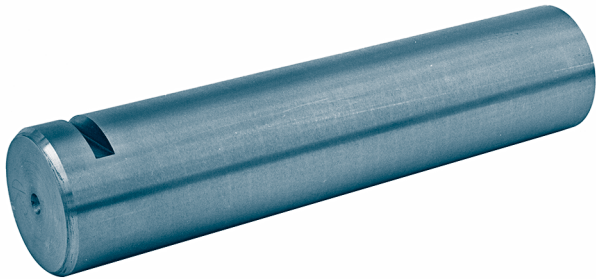


Wheel axle without lubrication bore

fitting to travel wheels according to KG 014

KG 010.6



Designation of an axle for travel wheel - $\varnothing d1 = 300$ mm,
axle - $\varnothing d3 = 50$ mm, length 210 mm:

Axle 50 × 210 KG 010.6

Material: 42CrMo4+QT or C45

Other material and dimensions on request.

for wheel - \varnothing d1	d3 f7	l4	a	b +0,5	t +0,5	unit weight ≈[kg]
200	40	190	25	8	7	1,8
250 300	50	210	25	8	8	3,1
315	55	265	25	8	9	4,8
400	60	265	25	8	9	5,7