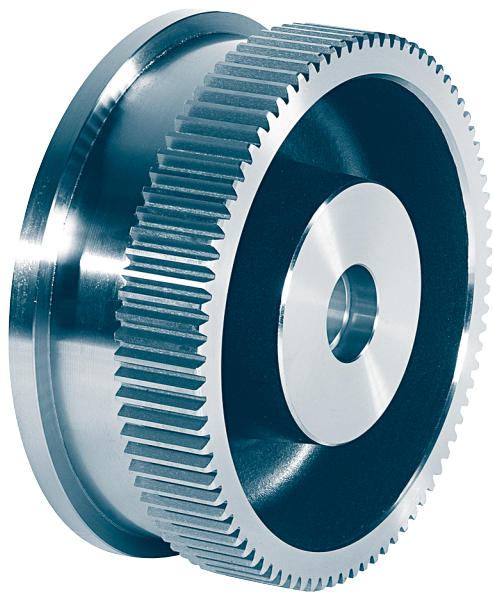


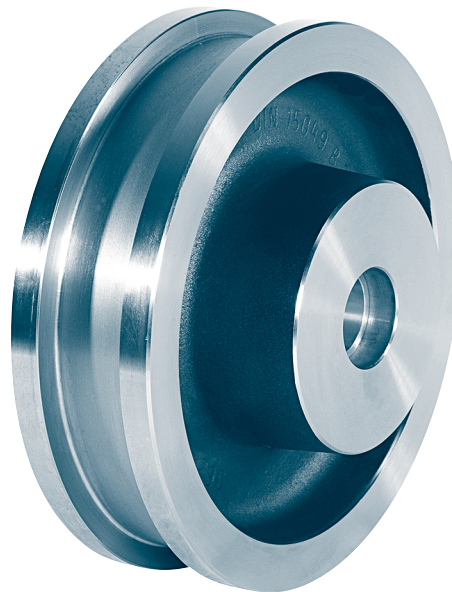
## Crane wheels with slide bearing

suitable for older travelling devices Demag brand

**KG 012**



**Form A** with gear ring



**Form B** without gear ring

Designation of a travel wheel form A with gear ring,  
nominal- $\varnothing$  d1 = 300 mm, gauge b1 = 55 mm,  
with plain bearing  $\varnothing$  60/50 of Rg 7,  
module 3 and number of teeth 110:

**Crane wheel A 300 × 55 × 60 – 3 × 110 KG 012**

**Form A** with gear ring

**Form B** without gear ring

Other types of the running surface see KG 010.1.

The plain bearings are secured with setscrews towards twisting and dislocation.

Material:

Wheel body- $\varnothing$  300-500 C45 drop forged

Wheel body- $\varnothing$  630 GE420 (GS-70) with Ribs

Plain bearings G-CuSn7ZnPb (Rg 7)

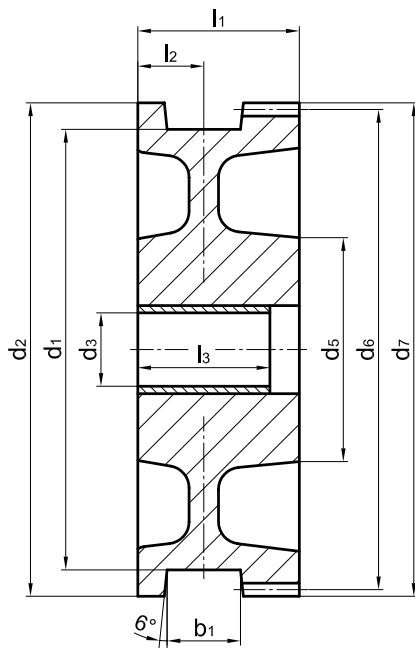
**Other material and dimensions on request.**

Suitable wheel axles see KG 010.4.

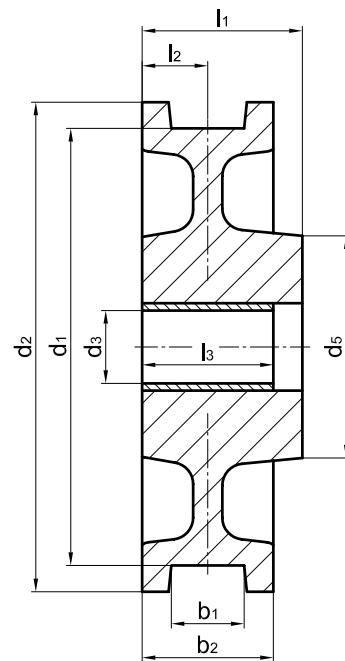
# Crane wheels with slide bearing

suitable for older travelling devices Demag brand

# KG 012



**Form A** with gear ring



**Form B** without gear ring

wheel- Ø d1	b1	b2	d2	d3	d5	l1	l2	l3	gear ring <sup>2)</sup> (form A)				unit weight ≈[kg]		Demag Spare no.		
									modu- l	no. of teeth	d6	d7	form A	form B	form A	form B	
<b>h11</b>				<b>E9</b>													
<b>300</b>	55	90	330	50	152	110 <sup>2)</sup> 90	45	90	3	110	330	336	43	37	963 617 44	-	963 619 44
<b>320</b>	55	98	348	50	167	138	49	100	4	85	340	348	55	49	963 333 44	963 338 44	
<b>400</b>	55	98	432	60	197	138	49	100	4	106	424	432	86	71	963 433 44	963 438 44	
	65														963 453 44	963 458 44	
<b>500</b>	70	105	540	70	230	166	52,5	110	6	88	528	540	156	125	963 535 44	963 528 44	
<b>630</b>	75/85 <sup>1)</sup>	120	680	80	180	200	60	120	8	83	664	680	235	181	-	-	
									6	111	666	678					

1) The dimension of the gauge recess b1 to be stated with order.

2) Overall width 110 mm, Hub length 90 mm.

3) Module and number of teeth to be stated with order.  
Tooth form according to DIN 867 without appending modification, pressure angle 20 degree.