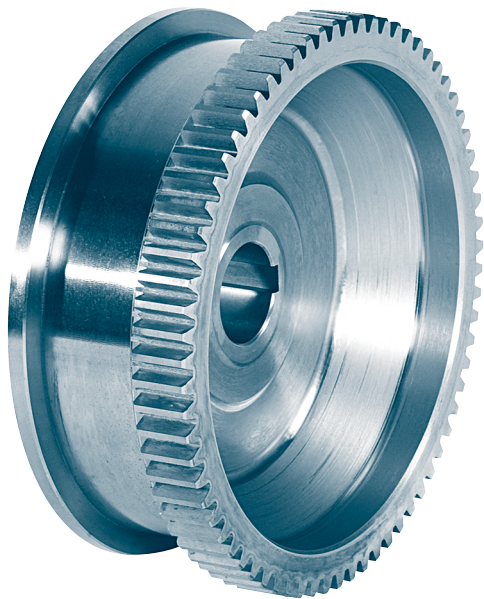


## Crane wheels for rotating shafts

with feather keyway according to DIN 6885-1

suitable for older types of the trolley traveling winches Demag brand

**KG 013**



**Form A** with gear ring



**Form B** without gear ring

Designation of a travel wheel form A with gear ring,  
nominal- $\varnothing$  d1 = 200 mm,  
gauge b1 = 55 mm, bore- $\varnothing$  d2 = 45 mm H7,  
module 4 and number of teeth 58:

**Crane wheel A 200 × 55 × 45 H7 – 4 × 58 KG 013**

**Form A** with gear ring

**Form B** without gear ring

Material: C45

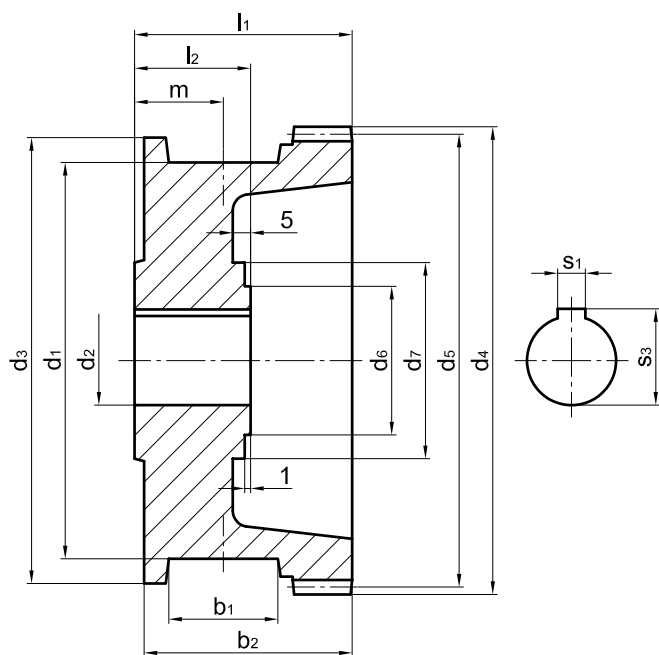
**Other material and dimensions on request.**

# Crane wheels for rotating shafts

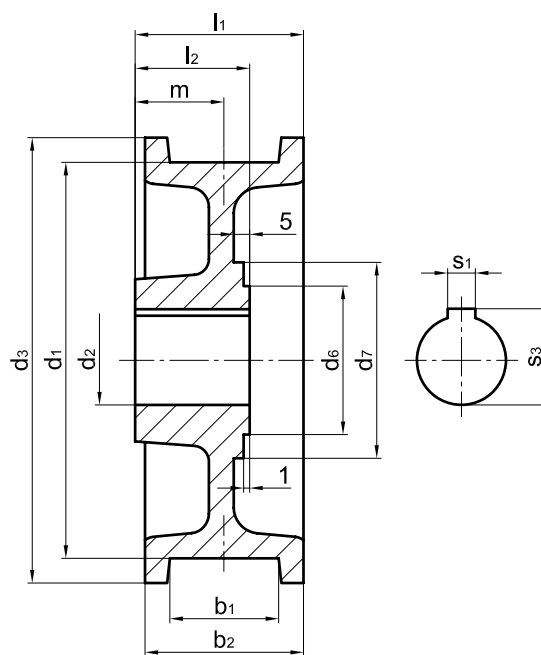
with feather keyway according to DIN 6885-1

suitable for older types of the trolley traveling winches Demag brand

## KG 013



**Form A** with gear ring



**Form B** without gear ring

wheel- Ø d1	b1		b2		d2	d3	d6	d7	l1		l2	m	s1	s3	gear ring <sup>1)</sup> (form A)				unit weight ≈[kg]		Demag spare no.			
	form A	form B	form A	form B					form A	form B					mo- dule	no. of teeth	d4	d5	form A	form B	form A	form B		
h11					H7																			
200	55	105	80		45										4	58							598 456 44	598 458 44
					60																		598 344 44	598 346 44
250	55	105	80		50										4	71							598 856 44	598 858 44
					65																		598 876 44	598 878 44

1) Gearing corrected, addendum modification coefficient  $x = -0,5$ .  
Pressure angle 20 degree.