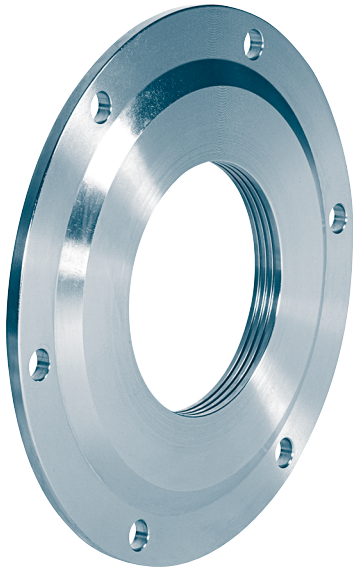


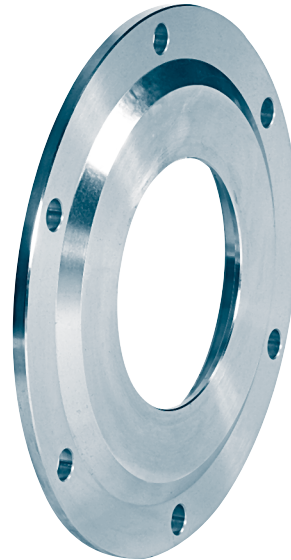
## Covers

for wheels acc. to DIN 15 078 and 15 079  
Rolling bearings series 222

**DIN 15 084**



**Form A** with labyrinth gland



**Form B** for radial shaft seal rings

Description of a cover form A, for crane wheel- $\varnothing$  d1 = 500 mm:

### Covers A 500 DIN 15 084

**Form A** with labyrinth gland

**Form B** for radial shaft seal rings

This standard is applicable only for crane wheels acc. to DIN 15078 and DIN 15079 with anti friction bearings series 222.

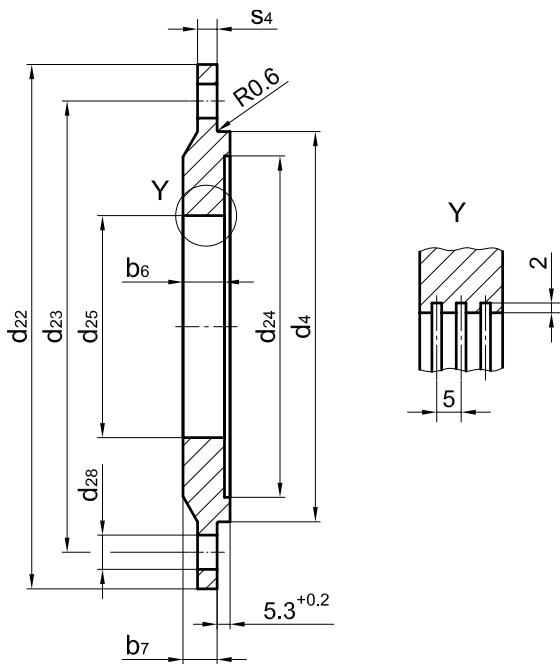
Material: S355J2G3 (St 52-3)

**Other material and dimensions (e.g. for crane wheels with anti friction bearings series 223) on request.**

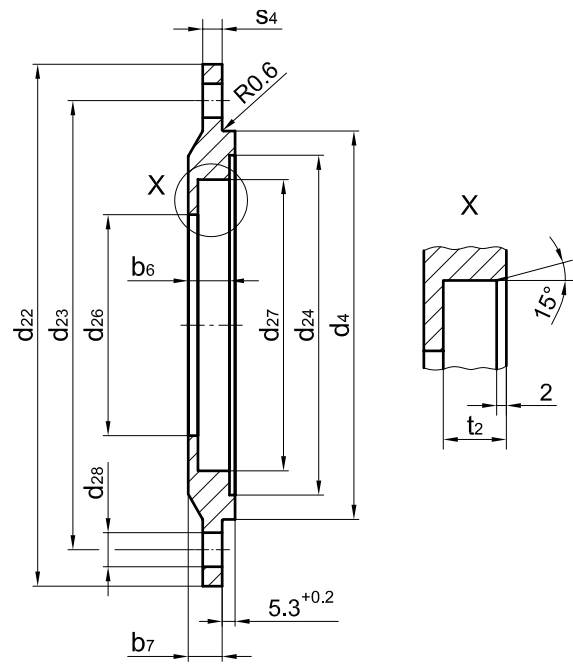
# Covers

for wheels acc. to DIN 15 078 and 15 079  
Rolling bearings series 222

# DIN 15 084



**Form A** with labyrinth gland<sup>1)</sup>



**Form B** for radial shaft seal rings<sup>2)</sup>

for wheel-Ø d1	d4 f8	d22	d23	d24	d25 +0,2	d26	d27 H8	number of bores d28	b6	b7	s4	t2	radial shaft seal rings acc. to DIN 3760	unit weight ≈[kg]
<b>315</b>	160	215	185	140	91	91	120	4 × 14	17	14	8	13	A 90 × 120 × 12	3,0
<b>400</b>	180	235	205	160	101	101	125	4 × 14	17	14	8	13	A 100 × 125 × 12	3,5
<b>500</b>	215	280	240	195	121	121	150	6 × 14	17	14	8	13	A 120 × 150 × 12	5,0
<b>630</b>	230	295	260	210	131	131	160	6 × 18	17	14	10	13	A 130 × 160 × 12	6,0
<b>710</b>	270	335	300	250	151	151	180	6 × 18	21	18	10	16	A 150 × 180 × 15	7,5
<b>800</b>	290	355	320	270	161	161	190	6 × 18	21	18	10	16	A 160 × 190 × 15	9,0
<b>900</b>	320	385	350	295	181	181	210	8 × 18	21	18	10	16	A 180 × 210 × 15	11,5
<b>1000</b>	360	425	390	330	201	201	230	8 × 18	21	18	10	16	A 200 × 230 × 15	15,0
<b>1120</b>	400	485	440	370	221	221	250	8 × 23	22	20	12	16	A 220 × 250 × 15	20,0
<b>1250</b>	440	525	480	410	241	241	270	8 × 23	22	20	12	16	A 240 × 270 × 15	22,0

1) Without certain agreement, covers form A will be installed.

2) Sealing lip mounted in exterior position to allow discharge of grease.