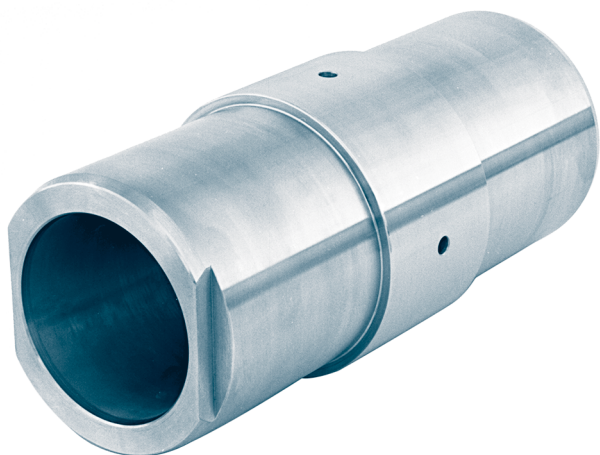


Internal bushing and spacers rings

for crane wheels acc. to DIN 15 078 and 15 079
Rolling bearings series 222

DIN 15 086



Internal bush

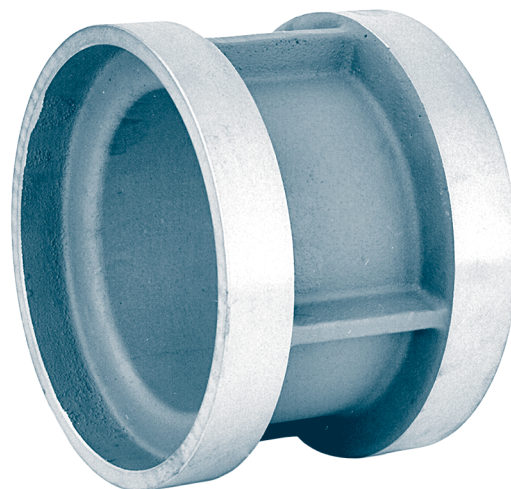
Designation of a internal bush for wheel- \varnothing d1 = 500 mm form B acc. to DIN 15 078 and 15 079:

Internal bush B 500 DIN 15 086

Flattening against rotation mounted on gear ring side.

Material: S355 (St 52)

Other material and dimensions(e.g. for rolling bearings series 223) on request.



Spacer ring

Designation of a spacer ring for wheel- \varnothing d1 = 630 mm form S acc. to DIN 15 078 and 15 079:

Spacer ring S 630 DIN 15 086

Material: S355 (St 52) or
EN-GJS-400-15 (GGG-40)

Other material and dimensions(e.g. for rolling bearings series 223) on request.