

## Internal bushing and spacers rings

for crane wheels acc. to DIN 15 078 and 15 079  
Rolling bearings series 222

**DIN 15 086**



**Internal bush**

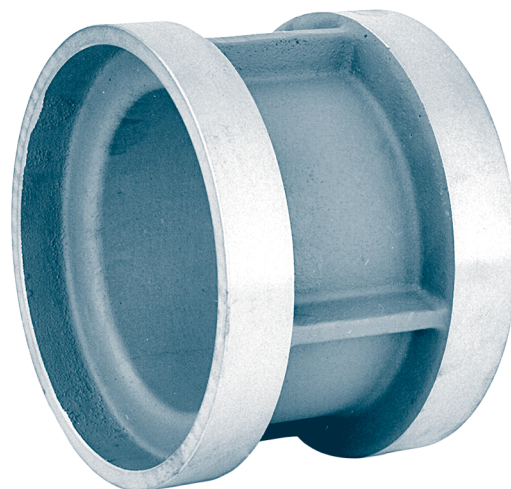
Designation of a internal bush for wheel- $\varnothing$  d1 = 500 mm form B acc. to DIN 15 078 and 15 079:

**Internal bush B 500 DIN 15 086**

Flattening against rotation mounted on gear ring side.

Material: S355 (St 52)

**Other material and dimensions(e.g. for rolling bearings series 223) on request.**



**Spacer ring**

Designation of a spacer ring for wheel- $\varnothing$  d1 = 630 mm form S acc. to DIN 15 078 and 15 079:

**Spacer ring S 630 DIN 15 086**

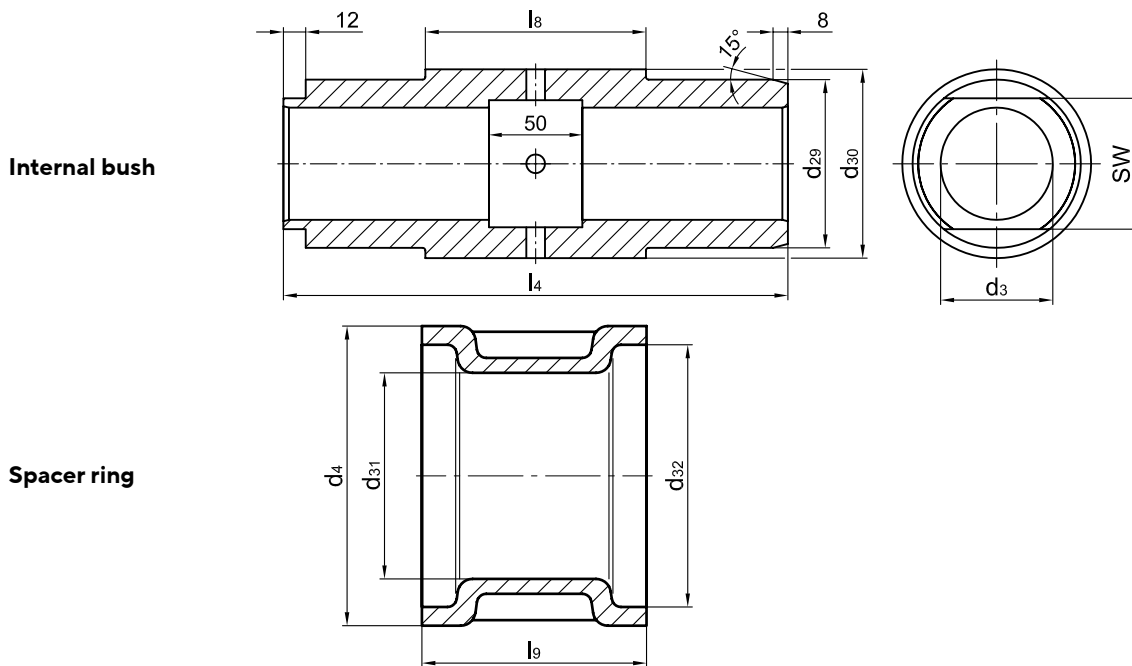
Material: S355 (St 52) or  
EN-GJS-400-15 (GGG-40)

**Other material and dimensions(e.g. for rolling bearings series 223) on request.**

# Internal bushing and spacer rings

for crane wheels acc. to DIN 15 078 and 15 079  
Rolling bearings series 222

## DIN 15 086



for crane wheel		Rolling bearings		d3	d4	d29	d30	d31	d32	l4	l8	l9	width across flats S
Form	d1	type	width of bearing	D10	-0,2 -0,4	g6				-0,5		+0,2	
S	<b>315</b>	22218	40	60	160	90	101	110	140	250	99,4	100	70
B										270	119,4	120	
S	<b>400</b>	22220	46	80	180	100	113	135	160	280	117,4	118	90
B										310	147,4	148	
S	<b>500</b>	22224	58	90	215	120	132	150	195	290	103,4	104	100
B										320	133,4	134	
S	<b>630</b>	22226	64	100	230	130	145	160	210	330	121,4	122	110
B										370	161,4	162	
S	<b>710</b>	22230	73	110	270	150	164	180	250	370	143,4	144	125
B										440	213,4	214	
S	<b>800</b>	22232	80	125	290	160	175	190	270	390	149,4	150	140
B										460	219,4	220	
S	<b>900</b>	22236	86	140	320	180	214	235	290	410	157,4	158	150
B										480	227,4	228	
S	<b>1000</b>	22240	98	160	360	200	219	275	330	410	123,4	124	175
B										480	193,4	194	
B	<b>1120</b>	22244	108	180	400	220	242	280	380	520	213,4	214	200
B	<b>1250</b>	22248	120	200	440	240	265	320	420	520	189,4	190	220