

Form B2 symmetrical hub
covers with radial shaft sealrings

Designation of a wheel form B2 with nominal- \varnothing d1 = 630 mm,
gauge b2 = 100 mm, incl. self aligning roller bearing 22224,
covers with radial shaft seal rings:

Crane wheel B2 – 630 × 100 TGL 34964

- Form A1** unsymmetrical hub,
covers with gap-sealing
- Form A2** unsymmetrical hub,
covers with radial shaft sealing
- Form B1** symmetrical hub,
covers with gap sealing
- Form B2** symmetrical hub,
covers with radial shaft sealing

The anti friction bearings are lubricated.

Without certain agreement crane wheels with \varnothing d1 \geq 320 mm
internal bushing with lubrication bore and covers with radial
shaft seal ring.

Material:

Wheel body- \varnothing 200–250 C45

Wheel body- \varnothing 320–1000 GE420 (GS-70) or
G42CrMo4+QT (GS-42CrMo4V)

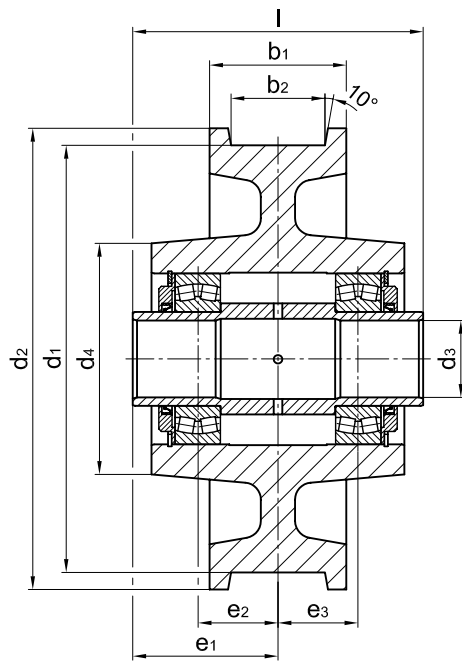
Internal bush S355 (St 52)

Other materials and dimensions as well as axles on request.

Crane wheels with gear ring see TGL 34965.

Crane wheels for axle without gear ring

TGL 34964



Form B2 symmetrical hub covers with radial shaft seal ring

| form | d1 h9 | b2 ¹⁾ | b1 | d2 | d3 D10 | d4 | e1 | e2 | e3 | l -0,5 | bearings | unit weight ≈[kg] |
|------|----------|------------------|-----|----|-----------|----|----|----|----|-----------|----------|----------------------|
| 200 | | 40-75 | 105 | | | | | | | | | |
| 250 | | 40-80 | 110 | | | | | | | | | |
| 320 | | 40-80 | 110 | | | | | | | | | |
| 400 | | 40-90 | 125 | | | | | | | | | |
| | | 90-100 | 140 | | | | | | | | | |
| 500 | | 40-90 | 125 | | | | | | | | | |
| | | 100-120 | 160 | | | | | | | | | |
| 630 | | 60-90 | 140 | | | | | | | | | |
| | | 100-120 | 180 | | | | | | | | | |
| 710 | | 60-90 | 140 | | | | | | | | | |
| | | 100-130 | 180 | | | | | | | | | |
| 800 | | 80-110 | 160 | | | | | | | | | |
| | | 120-130 | 200 | | | | | | | | | |
| 1000 | | 100-150 | 210 | | | | | | | | | |

Dimensions on request

1) The dimensions of the gauge recess b2 to be stated with order.