

Form B2 symmetrical hub, covers with radial shaft seal ring,
nominal- \varnothing d1 \leq 500 mm

Form B2 symmetrical hub, covers with radial shaft seal ring,
nominal- \varnothing d1 \geq 630 mm

Designation of a crane wheel form B2 with nominal- \varnothing d1 = 630 mm, gauge b2 = 100 mm, incl. self aligning roller bearings 22224, covers with radial shaft seal ring, with large gearing (Zentrier- \varnothing d5= 530 and number of teeth 62):

Crane wheel B2 – 630 × 100 – 530 × 62 TGL 34 965

- Form A1** unsymmetrical hub,
covers with gap sealing
- Form A2** unsymmetrical hub,
covers with radial shaft seal ring
- Form B1** symmetrical hub,
covers with gap sealing
- Form B2** symmetrical hub,
covers with radial shaft seal ring

The rolling bearings are lubricated.

Without certain agreement crane wheels with \varnothing d1 \geq 320 mm internal bushing with lubrication bore and covers with radial shaft seal ring.

Material:

Wheel body- \varnothing 200 – 250 C45

Wheel body- \varnothing 320 – 1000 GE420 (GS-70) or
G42CrMo4+QT (GS-42CrMo4V)

Internal bush S355 (St 52)

Gear ring C45 or GE300 (GS-60)

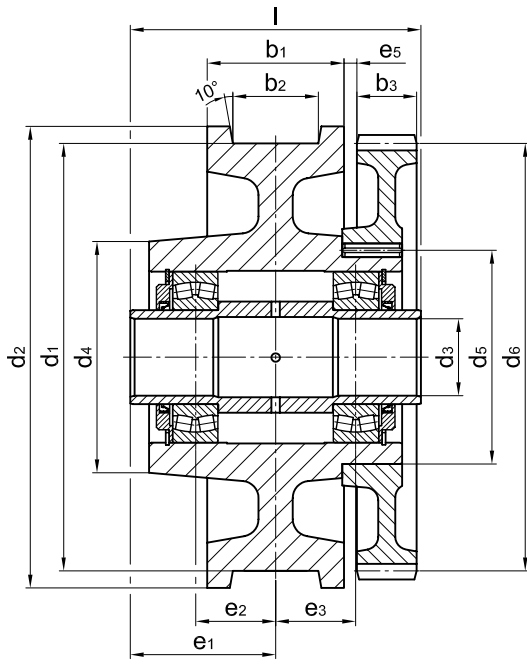
Other material and dimensions as well as axles on request.

Gear rings see TGL 34 966

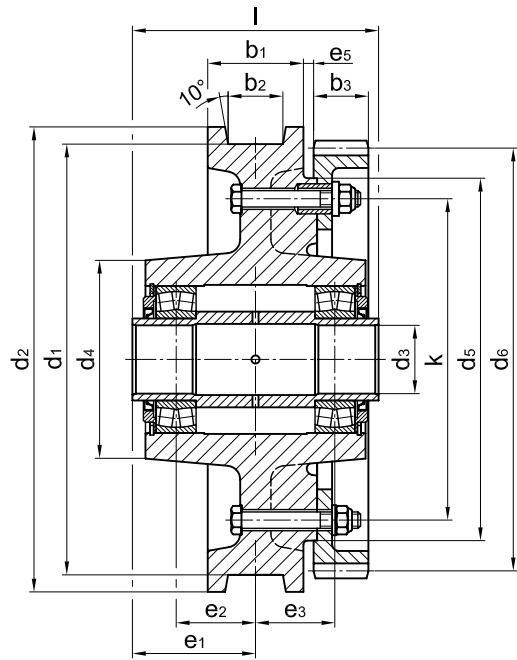
Crane wheels without gear ring see TGL 34 964.

Crane wheels for axle with gear ring

TGL 34965



Form B2 symmetrical hub, covers with radial shaft seal ring, nominal- \varnothing $d_1 \leq 500$ mm



Form B2 symmetrical hub, covers with radial shaft seal ring, nominal- \varnothing $d_1 \geq 630$ mm

| form | d1 | b2 ¹⁾ | b1 | d2 | d3 | d4 | d5 | gear ring ²⁾ | | | | e1 | e2 | e3 | e5 | k | l -0,5 | bea- rings | unit weight |
|------|----|------------------|-----|----|-----|----|------------------------|-------------------------|----|---|---|----|----|----|----|---|-----------|---------------|-------------|
| | h9 | | | | D10 | | Tole- ranz- feld | b3 | d6 | m | z | | | | | | | | ≈[kg] |
| 200 | | 40-75 | 105 | | | | | | | | | | | | | | | | |
| 250 | | 40-80 | 110 | | | | | | | | | | | | | | | | |
| 320 | | 40-80 | 110 | | | | | | | | | | | | | | | | |
| 400 | | 40-90 | 125 | | | | | | | | | | | | | | | | |
| | | 90-100 | 140 | | | | | | | | | | | | | | | | |
| 500 | | 40-90 | 125 | | | | | | | | | | | | | | | | |
| | | 100-120 | 160 | | | | | | | | | | | | | | | | |
| 630 | | 60-90 | 140 | | | | | | | | | | | | | | | | |
| | | 100-120 | 180 | | | | | | | | | | | | | | | | |
| 710 | | 60-90 | 140 | | | | | | | | | | | | | | | | |
| | | 100-130 | 180 | | | | | | | | | | | | | | | | |
| 800 | | 80-110 | 160 | | | | | | | | | | | | | | | | |
| | | 120-130 | 200 | | | | | | | | | | | | | | | | |
| 1000 | | 100-150 | 210 | | | | | | | | | | | | | | | | |

Dimensions on request

1) The dimension of the gauge recess b2 to be stated with order.

2) Tooth form acc. to DIN 867 without appending modification. Pressure angle 20 degree.