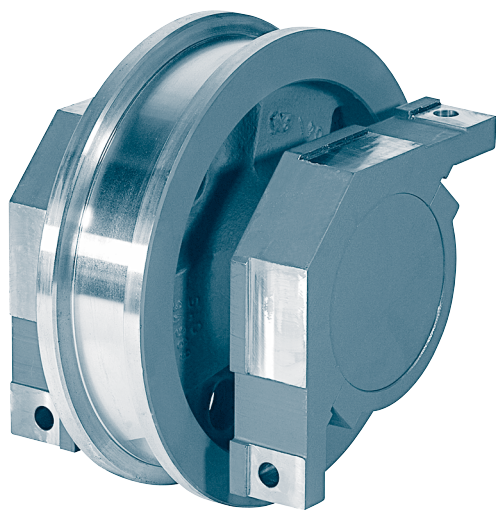


Wheel sets with corner support (driven and nondriven)

TGL 34968



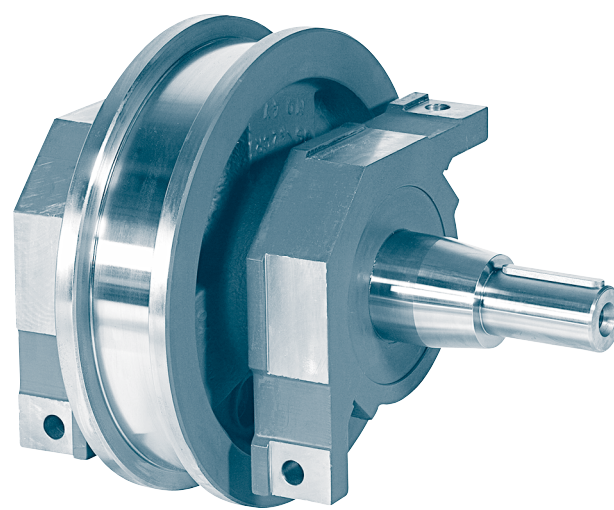
Form A1 Crane wheel with idle shaft
(nondriven wheel set)

Designation of a crane wheel form A1 (nondriven wheel set) with corner support, nominal- \varnothing d1 = 400 mm, gauge b2 = 80 mm, incl. self aligning roller bearings 222 20:

Crane wheel A1 – 400 × 80 TGL 34968

Designation of a crane wheel form B3 (driven wheel set) without corner support, nominal- \varnothing d1 = 400 mm, gauge b2 = 100 mm, shaft- \varnothing d5 = 70 mm, Wellenmaß e6 = 635 mm, incl. self aligning roller bearings 222 20:

Crane wheel B3 – 400 × 100 – 70 × 635 TGL 34968



Form A3 Crane wheel with drive shaft (driven wheel set)

Other material and dimensions on request.

Type with shaft ends suitable for hollow shaft drive units of all manufacturers on request.

- Form A** crane wheels with corner support
Form B crane wheels without corner support and covers
- Form A1, B1** nondriven wheel set with idle shaft
Form A2, B2 driven wheel set with drive shaft for coupling
Form A3, B3 driven wheel set with drive shaft for hollow shaft gear unit
Form A4, B4 driven wheel set with drive shaft for coupling and hollow shaft gear unit
- Form A5, B5** driven wheel set with drive shaft for hollow shaft gear unit

The anti friction bearings are lubricated. Re-lubrication by using the lubrication nipple in the corner support or in the outer covers.

Material:

Wheel body GE420 (GS-70) or G42CrMo4+QT
(GS-42CrMo4-V)

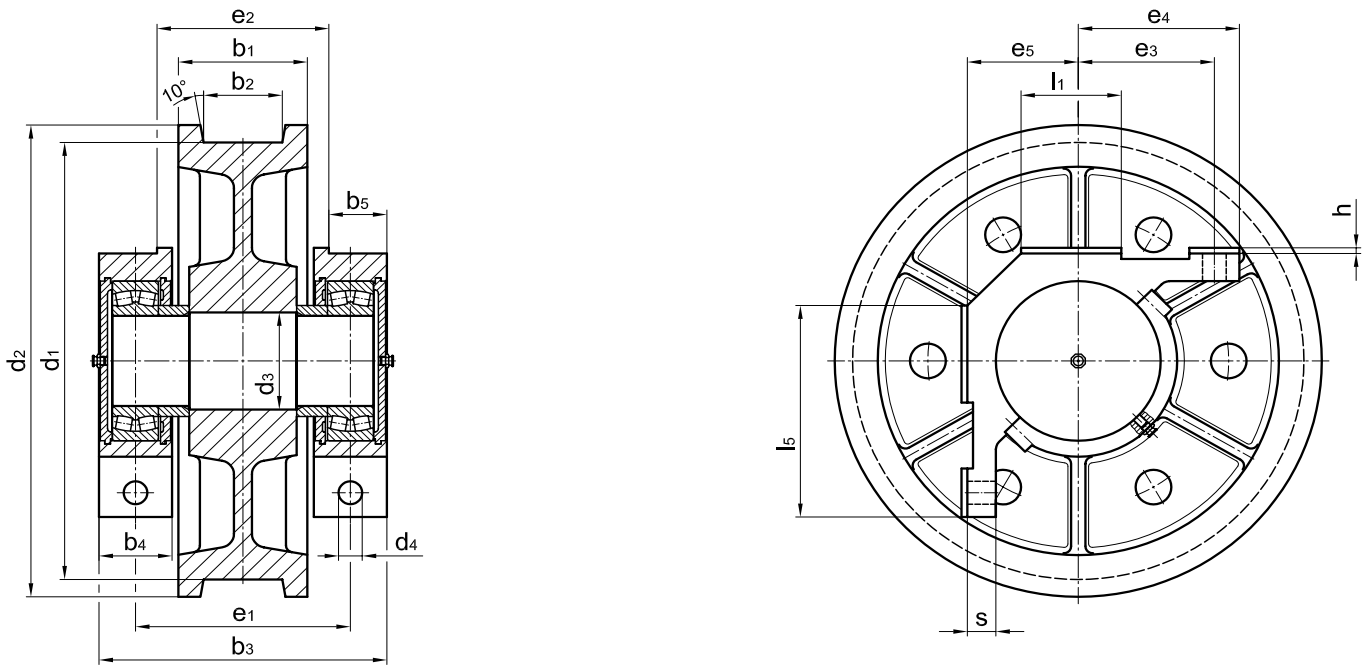
drive shaft 42CrMo4QT

idle shaft C45

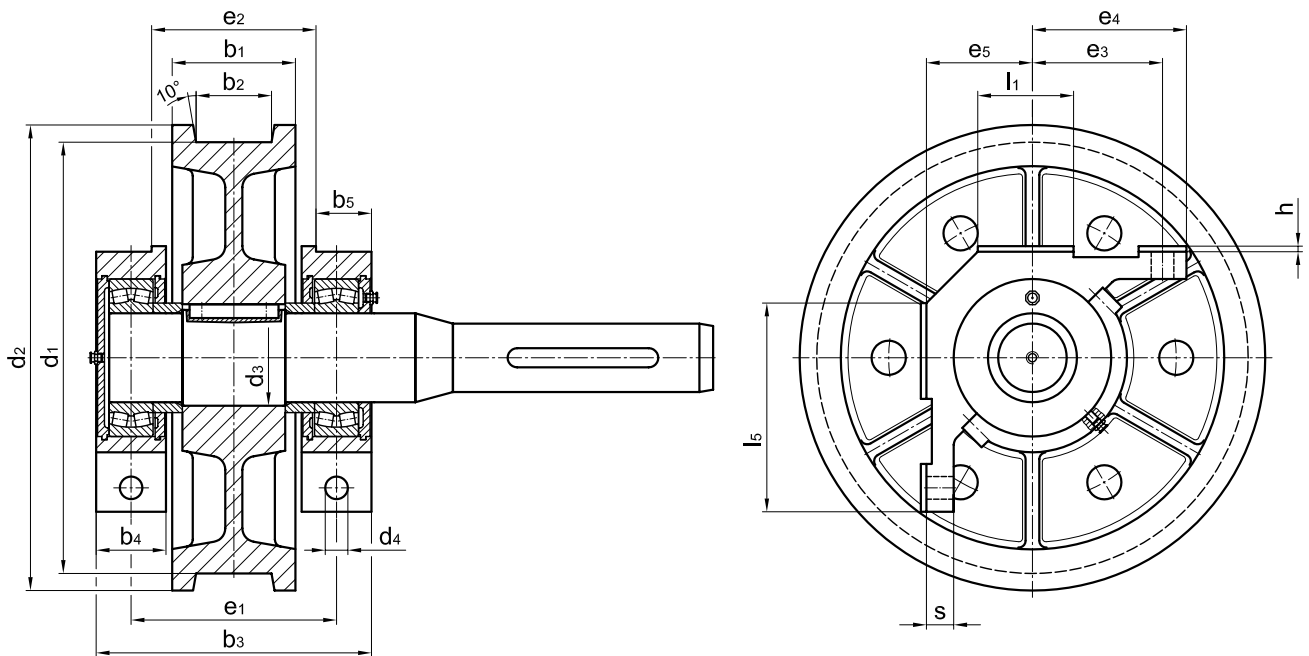
corner support S355J2 G3 (St 52-3)

Wheel sets with corner support (driven and nondriven)

TGL 34968



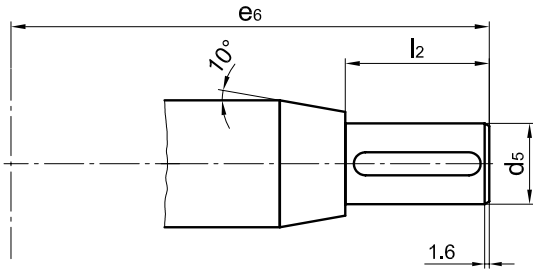
Form A1 crane wheel with shaft (nondriven wheel set)



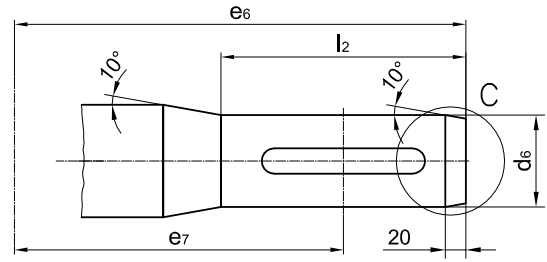
Form A3 crane wheel with drive shaft (driven wheel set)

Wheel sets with corner support (driven and nondriven)

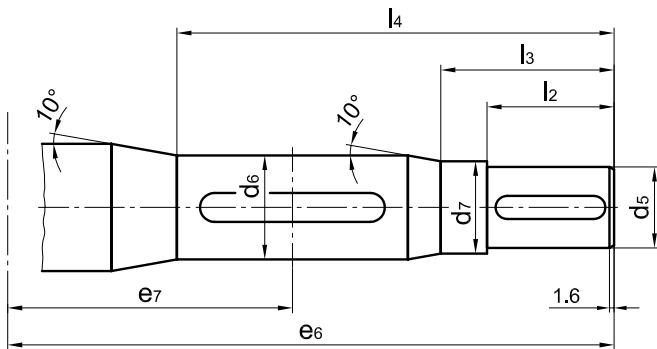
TGL 34968



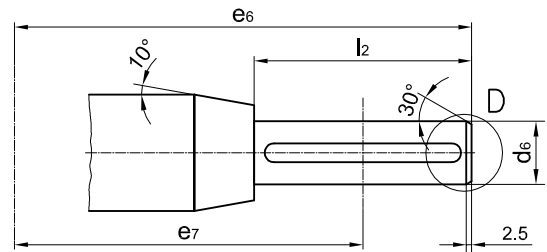
Form A2, B2 for coupling



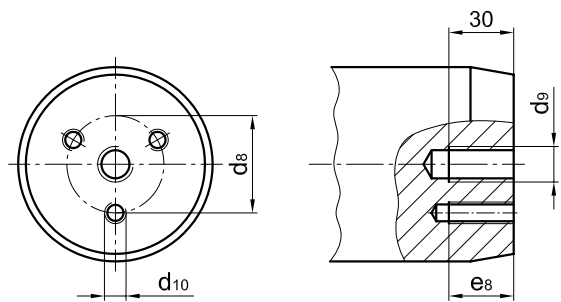
Form A3, B3 for hollow shaft gear unit



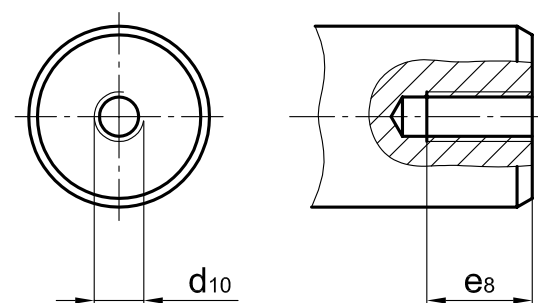
Form A4, B4 for coupling and hollow shaft gear unit



Form A5, B5 for hollow shaft gear unit



view C



view D

Wheel sets with corner support (driven and nondriven)

TGL 34968

Dimensions

nominal-Ø d1	form	b2	b1	b3	b4	b5	d2	d3	d4	e1	e2	e3	e4	e5 -0,15	h	l1	l5	s	bea- rings		
h9								m6			toler- ance										
320	all	40-70	100																		
		80-90	130																		
400	all	50-80	120																		
		90-120	160																		
500	all	50-80	120																		
		90-120	160																		
630	all	60-90	140																		
		100-130	180																		
710	all	60-80	140																		
		90-130	180																		
800	all	80-90	160																		
		100-130	200																		
900	all	90-110	190																		
		120-150	210																		

Dimensions on request

Wheel sets with corner support (driven and nondriven)

TGL 34968

Dimensions of drive shaft ends

nominal-Ø d1	form	d5 m6	d6 g6	d7 -0,1	d8	d9	d10	e ₆	e7	e8	l2	l3	l4	key
320	A2, B2	45	-	-										
		60												
		70												
	A3, B3	-	55	-										
		-	70	-										
	A4, B4	60	70	65										
	A5, B5	-	40	-										
			50											
			60											
400	A2, B2	50	-	-										
		60												
		70												
	A3, B3	-	55	-										
		-	70	-										
	A4, B4	60	70	65										
		70	90	80										
	A5, B5	-	40	-										
			50											
60														
A2, B2	60	-	-											
	70													
	80													
A3, B3	-	70	-											
		90												
500	A4, B4	70	90	80										
		80	100	90										
	A5, B5	-	50	-										
			60											

Dimensions on request

Wheel sets with corner support (driven and nondriven)

TGL 34968

dimensions of drive shaft ends (continuance)

nominal-Ø d1	Form	d5 m6	d6 g6	d7 -0,1	d8	d9	d10	e6	e7	e8	l2	l3	l4	key	
630	A2, B2	60													
		70	-	-											
		80													
	A3, B3		70												
			90												
			100												
	A4, B4	70	90	80											
		80	100	90											
	A5, B5		50												
			60												
710	A2, B2	70													
		80	-	-											
		90													
	A3, B3		90												
		100													
800	A2, B2	110	-	-											
	A3, B3		90												
			100												
900	A2, B2	100													
		110	-	-											
		130													

Dimensions on request

Crane wheels

for driven and nondriven wheel sets acc. to TGL 34968

TGL 34968



Crane wheel body A 630 × 90
(narrow type)



Crane wheel body A 630 × 110
(broad type)

Designation of a wheel with nominal- \varnothing d1 = 400 mm,
gauge b2 = 80 mm, bores- \varnothing d3 = 105 H7,
with feather keyway acc. to DIN 6885-1:

Crane wheel body A 400 × 80 × 105 H7 TGL 34968

Form A with feather keyway acc. to DIN 6885-1

Form B without feather keyway

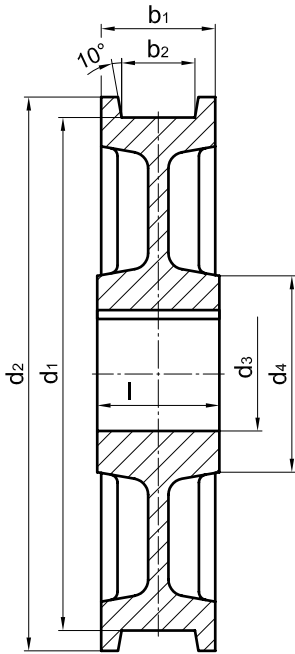
Material: GE420 (GS-70) or
G42CrMo4+QT (GS-42CrMo4V)

Other material and dimensions on request.

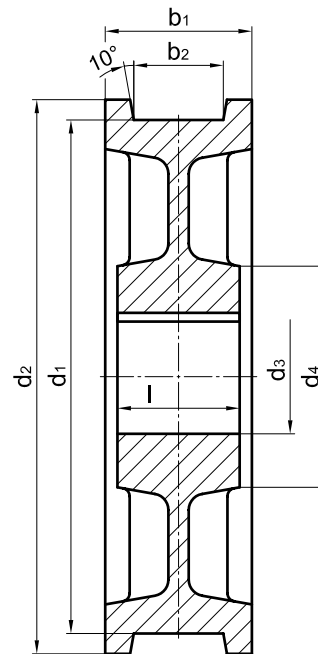
Crane wheels

for driven and nondriven wheel sets acc. to TGL 34968

TGL 34968



Crane wheel body A 630 × 90
(narrow type)



Crane wheel body A 630 × 110
(broad type)

form	nominal-Ø d1 h9	b2 ¹⁾	b1	d2	d3 H7	d4	l +0,2	unit weight ≈[kg]
A; B	320	40-70	100	Dimensions on request				
		80-90	130					
A; B	400	50-80	120					
		90-120	160					
A; B	500	50-80	120					
		90-120	160					
A; B	630	60-90	140					
		100-130	180					
A; B	710	60-80	140					
		90-130	180					
A; B	800	80-90	160					
		100-130	200					
A; B	900	90-110	190					
		120-150	210					

1) The dimension of the gauge recess b2 to be stated with order.