

## Crane wheels

for driven and nondriven wheel sets acc. to TGL 34968

**TGL 34968**



**Crane wheel body A 630 × 90**  
(narrow type)



**Crane wheel body A 630 × 110**  
(broad type)

Designation of a wheel with nominal- $\varnothing$  d1 = 400 mm,  
gauge b2 = 80 mm, bores- $\varnothing$  d3 = 105 H7,  
with feather keyway acc. to DIN 6885-1:

**Crane wheel body A 400 × 80 × 105 H7 TGL 34968**

**Form A** with feather keyway acc. to DIN 6885-1

**Form B** without feather keyway

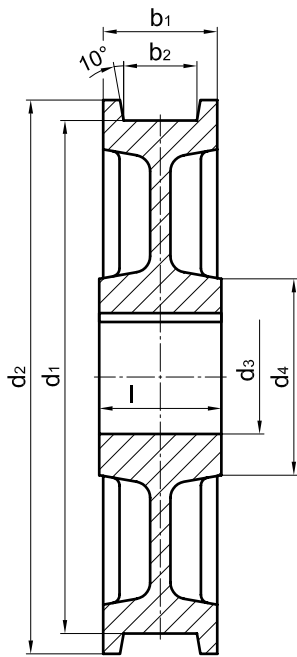
Material: GE420 (GS-70) or  
G42CrMo4+QT (GS-42CrMo4V)

**Other material and dimensions on request.**

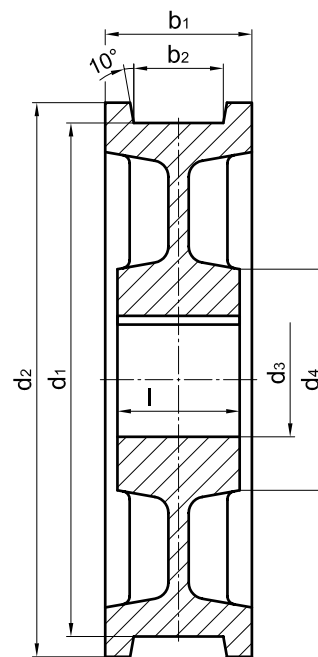
# Crane wheels

for driven and nondriven wheel sets acc. to TGL 34968

**TGL 34968**



**Crane wheel body A 630 × 90**  
(narrow type)



**Crane wheel body A 630 × 110**  
(broad type)

form	nominal-Ø d1 h9	b2 <sup>1)</sup>	b1	d2	d3 H7	d4	l +0,2	unit weight ≈[kg]
A; B	<b>320</b>	40-70	100	<b>Dimensions on request</b>				
		80-90	130					
A; B	<b>400</b>	50-80	120					
		90-120	160					
A; B	<b>500</b>	50-80	120					
		90-120	160					
A; B	<b>630</b>	60-90	140					
		100-130	180					
A; B	<b>710</b>	60-80	140					
		90-130	180					
A; B	<b>800</b>	80-90	160					
		100-130	200					
A; B	<b>900</b>	90-110	190					
		120-150	210					

1) The dimension of the gauge recess b2 to be stated with order.