

Installation and Maintenance Instructions

# **GUIDE ROLLER- UNIT**



## USE:

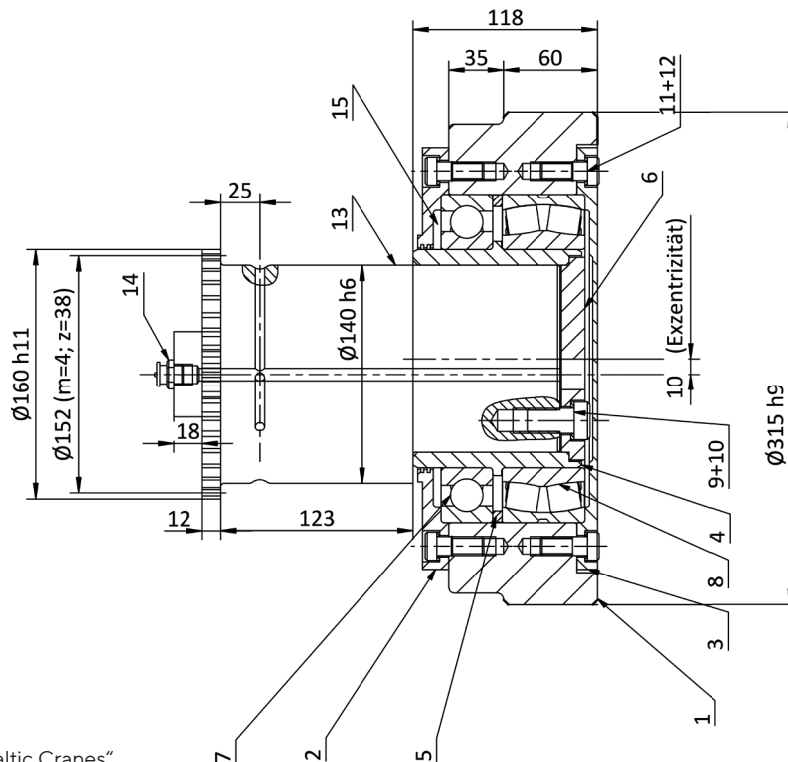
Zur seitlichen Führung einer Krananlage.

Die Führungsrollen werden paarweise in die vorhandene Stahlkonstruktion eingesetzt.

Bei der Verwendung ist unbedingt auf die Art der Schienenbefestigung und die Ausführung der Schiene zu achten. Die Führungsrolle muss so angeordnet werden, dass die Kopfflanke der Schiene und die Führungsrolle parallel zueinander verlaufen.

## LOAD:

Die Führungsrollen dürfen nur in radialer Richtung belastet werden.



Beispiel Führungsrolle für „Baltic Cranes“.

## ASSEMBLY:

1. Dismantle the fully assembled guide roller as supplied: undo the socket cap screws (11) and remove the end cover (3), undo the socket cap screws (9) and remove the end plate (6).
2. Remove the spacing pin (13) from the spacing bushing (4).
3. Insert the spacing pin (13) into the preassembled steelwork and fit the spacing bushing (4) together with the part-assembled guide roller.
4. Fit the end plate (6) with the socket cap screws (9+10).  
**Pay attention to the end plate installation position: ensure the relubrication holes on end plate and displacement pin are aligned.**
5. Fit the end cover (3) with the socket cap screws (11+12).
6. Lubricate the guide roller at the button-head grease nipple (14) with a suitable roller bearing grease until grease exits from the labyrinth seal.
7. Using a size 55 spanner, rotate the displacement pin (13) to set the required distance of the guide roller from the rail.
8. Once adjusted, lock the position into place by using the interlock on the spacing pin (13) and screw the locking plate (not supplied) to the steelwork with the four connection bolts.

## MAINTENANCE:

The bearing is sealed with a labyrinth seal (2) at the top and a cover (3) at the bottom, and is provided with a grease nipple (14) as a relubrication point.

As standard, the bearing is lubricated with a high-performance grease for applications in the range  $-50\text{ }^{\circ}\text{C}$  to  $+90\text{ }^{\circ}\text{C}$  (Renolit Unitemp 2 from Fuchs).

For applications under different conditions, other greases can also be used, but this must be specified separately in the order.

## SERVICING:

Retighten connection bolts to the nominal torque after 3–6 operating hours and then repeat this procedure after an additional three months.

Following this, service according to the conditions of use and operating conditions, but at least once a year (see BGV D6, Accident Prevention Regulations for Cranes). Depending on conditions of use, relubricate every 2,000 operating hours (max.).



Karl Georg GmbH  
Karl-Georg-Straße 3  
D-57612 Ingelbach-Bahnhof

T: +49 (0)2688 / 95 16 - 0  
info@karl-georg.de  
www.karl-georg.de

Subject to alterations by the manufacturer for the purposes of further technical development!

Thus, no claims can be derived from the information, figures and descriptions given in these operating instructions.

© 09/2024 Karl Georg GmbH

Reprinting, duplication or translation, also as extract, is not permitted without previous written consent of Karl Georg GmbH. All rights are expressly reserved for Karl Georg GmbH according to the copyright law. Subject to alterations

Printed in Germany