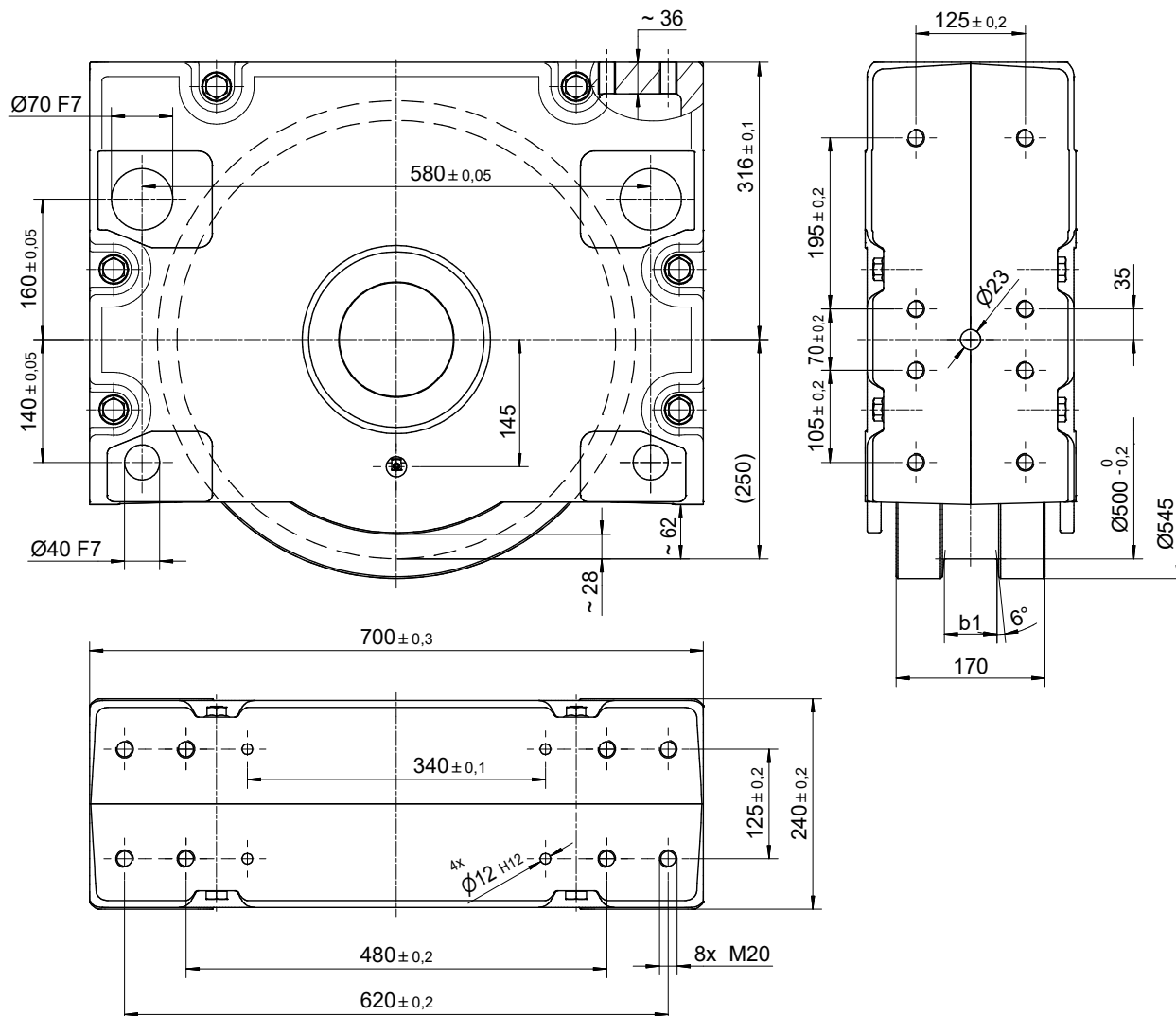


**Wheel block**

**RB 500**

# WHEEL BLOCK RB 500

## Primary dimensions



**Weight:** ca. 310 kg  
**max. wheel load:** 40 000 kg

## Ordering examples

### RBA 500×90

wheel block 500, driven, with internal taper, with two-sided wheel flange, design Form 1, running tread 90 mm

### RBN 500×90

Wheel block 500, non- driven, without internal taper, with two-sided wheel flange, design Form 1, running tread 90 mm

### RBA 500×130

Wheel block 500, driven, with internal taper, with one-sided wheel flange design Form 2, running tread 130 mm

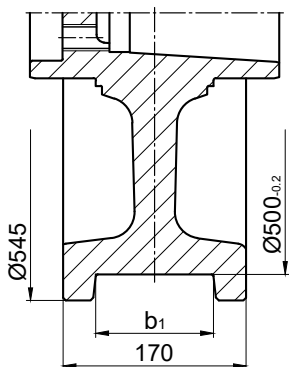
### RBA 500×170

Wheel block 500, driven, with internal taper, without wheel flanges, design Form 4

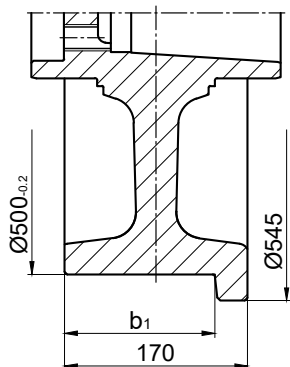
Design RBA and RBN refer to Page 5

# WHEEL BLOCK RB 500

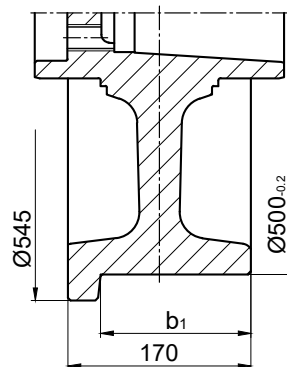
## Standard models



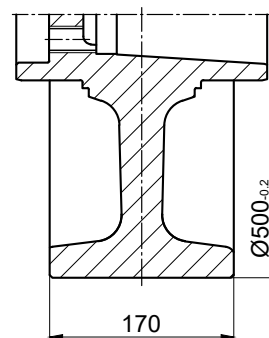
**Form 1**  
two-sided wheel flange



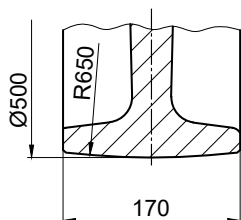
**Form 2<sup>1)</sup>**  
one-sided wheel flange  
on the drive side



**Form 3<sup>1)</sup>**  
one-sided wheel flange  
opposite to the drive side

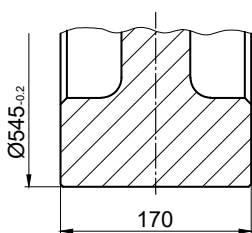


**Form 4**  
no wheel flanges with  
cylindrical running surface

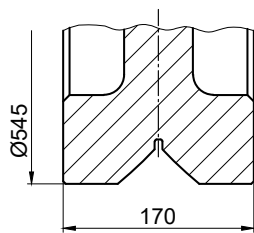


**Form 5**  
no wheel flanges with  
spherical running surface

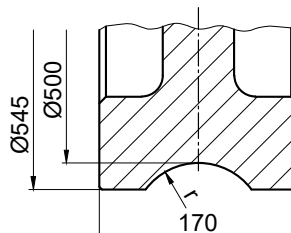
## Special models



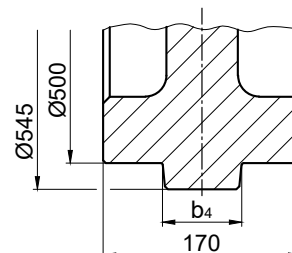
**Form 9**  
no wheel flanges, wide  
with cylindrical running surface



**Form 10**  
with prismatic guide



**Form 11**  
with concave groove  
 $r = 1.1 \times$  track radius  
(recommended)



**Form 12**  
with middle wheel flange

Form 1		Form 2 und 3		
Running tread $b_1$ for two-sided wheel flange		Running tread $b_1$ for one-sided wheel flange		
minimal	maximal	Standard	minimal	maximal
60	130	90	115	150

1) Forms 2 and 3 are identical for the non-driven Wheel block RBN

# WHEEL BLOCK RB 500

Connection options

## Top connection KA 500.1

Precisely fitted direct attachment as bolted connection (welded construction, roll section, etc.)

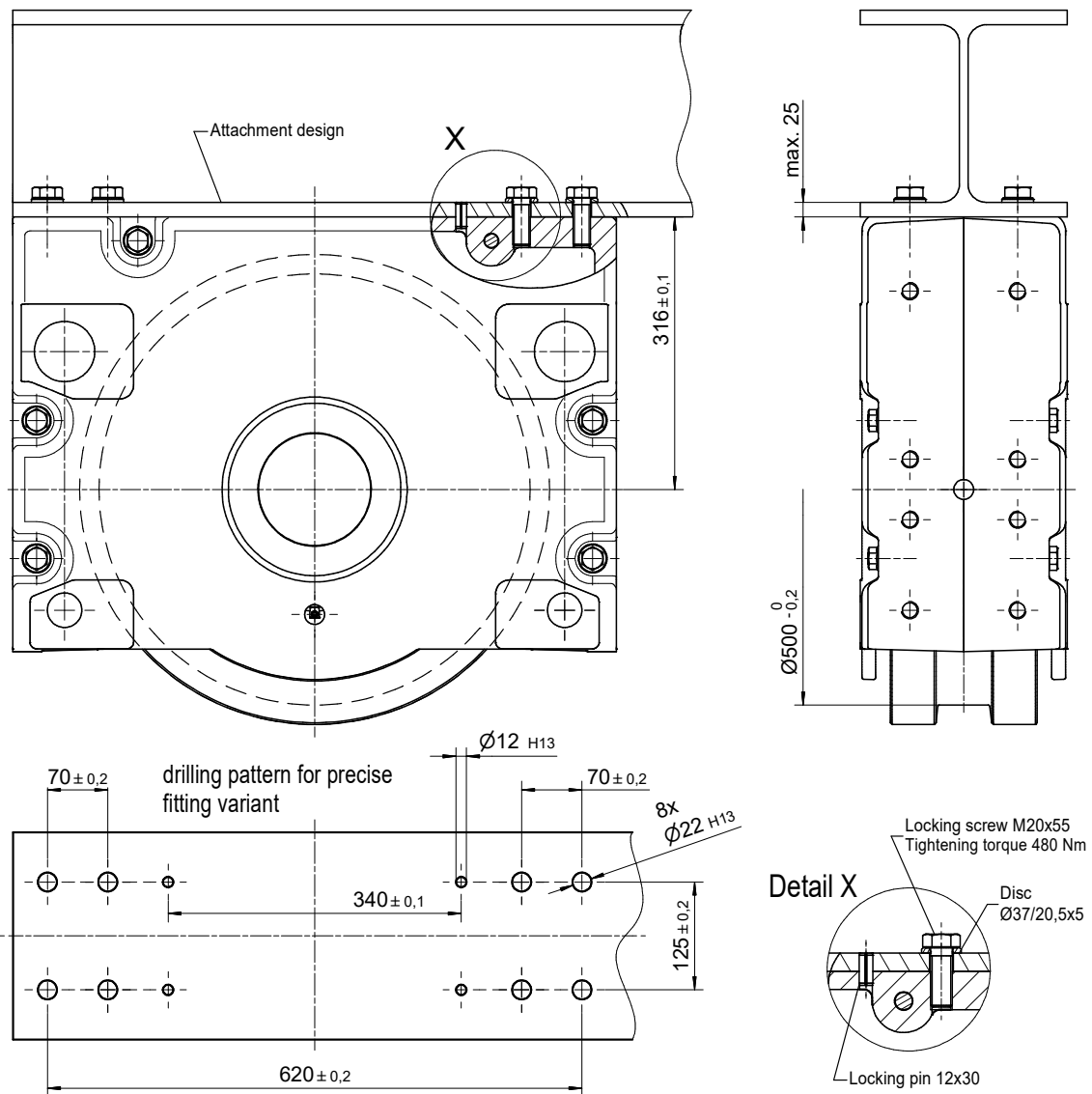
Top connection using locking screws for installation in accurately drilled connecting constructions. No adjustment of the wheel block is required.

### 1 Set KA 500.1 comprising of:

- 8 Hexagon screw with thread locking M20x55 –10.9  
DIN EN ISO 4017 (DIN 933)
- 8 Discs Ø37 / 20.5x5
- 4 Locking pins 12x30 DIN EN ISO 8752 (DIN 1481)

Mounting parts for larger sheet thicknesses and/or adjustable direct connection are available on request.

For the directional version refer to the pattern of drilling KA 500.2 (Page 148).



# WHEEL BLOCK RB 500

Connection options

## Top connection KA 500.2

**Adjustable direkt attachment as bolted connection (welded construction, roll section, etc.)**

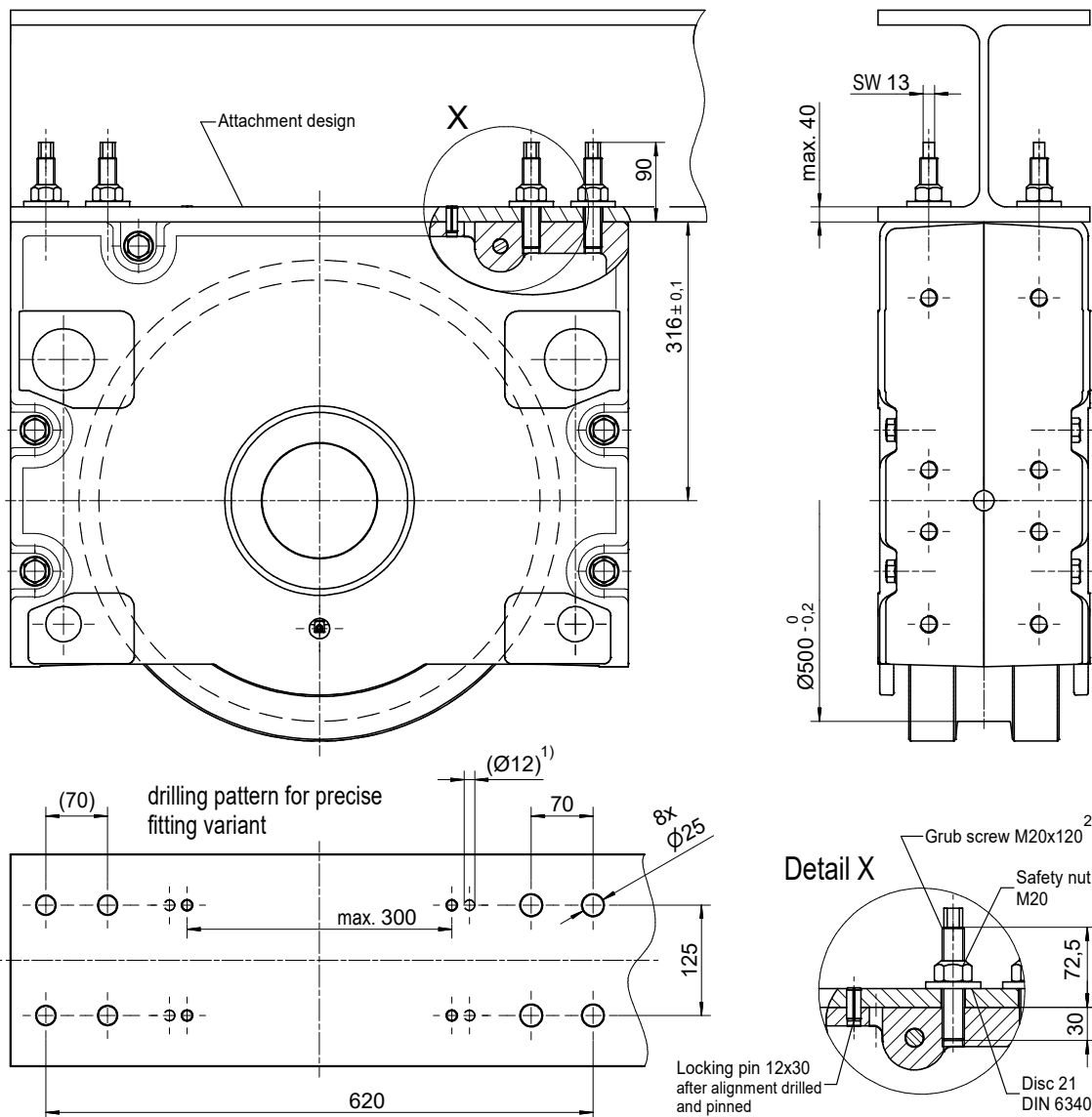
Top connection using locking pins for installation in attachment design with precisely or larger drilled attachment holes.

For larger drilled attachment holes, the wheel block must be aligned. Subsequently, the wheel block is attached by bolts and should be drilled with the locking pins 12×30 supplied. However, this should not be done in the area of the attachment bolts or the existing adjusting pin hole [1]. Alignment is not required for precisely drilled attachment holes.

### 1 Set KA 500.2 comprising of:

- 8 Grub screws M20×120 - 10.9 ZT
- 8 Safety nuts M20-10 DIN EN ISO 7042 (DIN 980)
- 8 Discs 21 DIN 6340
- 4 Locking pins 12×30 DIN EN ISO 8752 (DIN 1481)

**Longer locking pins are available for thicker plates.**



1) Pinning is not permitted in this area !

2) Can be factory-glued in the wheel block housing on request



# WHEEL BLOCK RB 500

Connection options

## Pin attachment BA 500.3

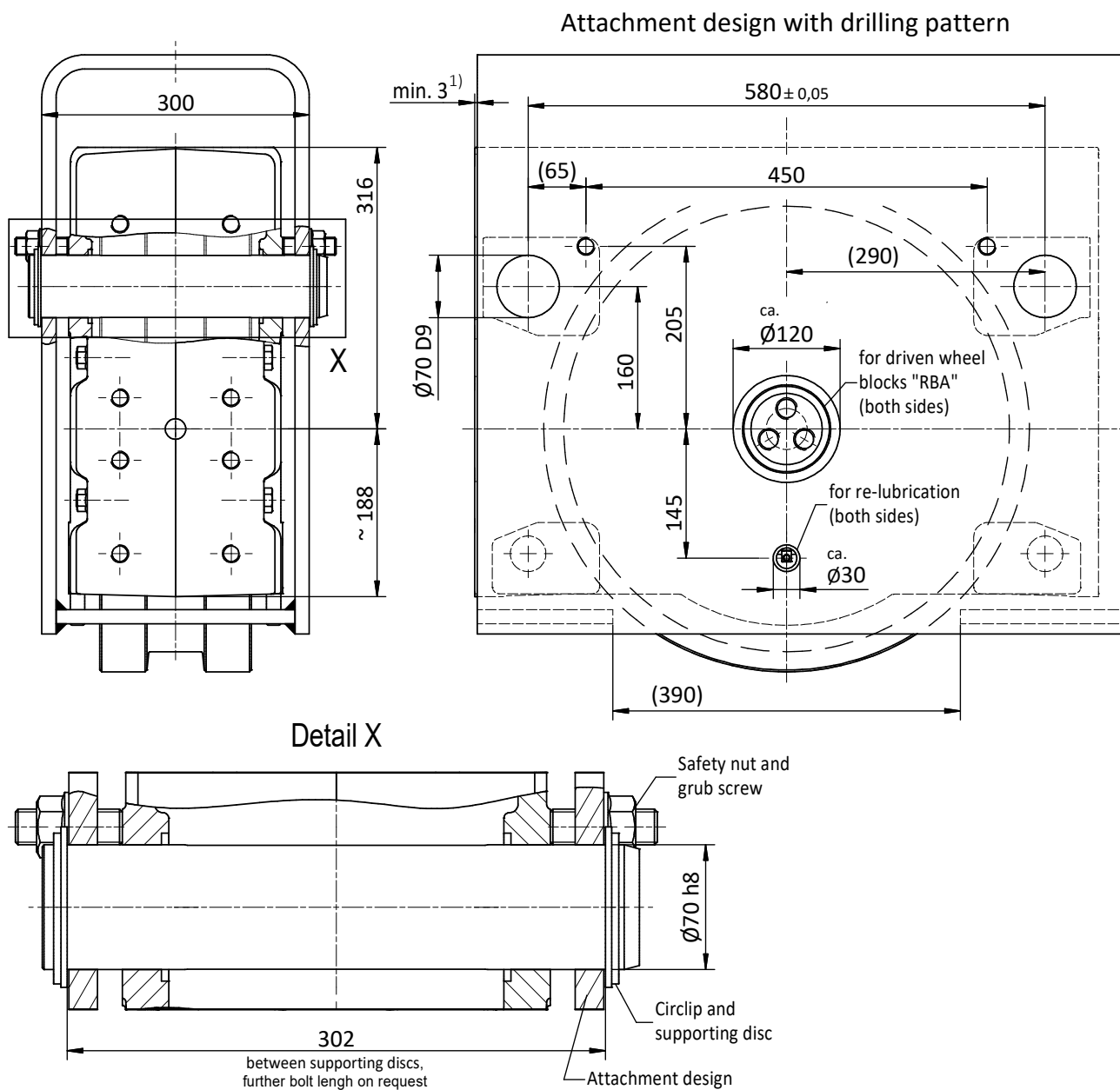
Adjustable pin attachment for installation in hollow profiles, floating levers, etc.

Pin connection with alignment possibility by adjustable grub screws. The alignment is done in assembled and relieved mode.

### 1 Set BA 500.3 comprising of:

- 2 Bolts  $\varnothing 70$
- 4 Circlipse 70x4, DIN 471
- 4 Supporting discs S 70x90 DIN 988
- 4 Threaded pins M 20 x 60 DIN 913
- 4 Safety nuts M20

Pin connections are available in special design according to the customer



# WHEEL BLOCKS RB 500

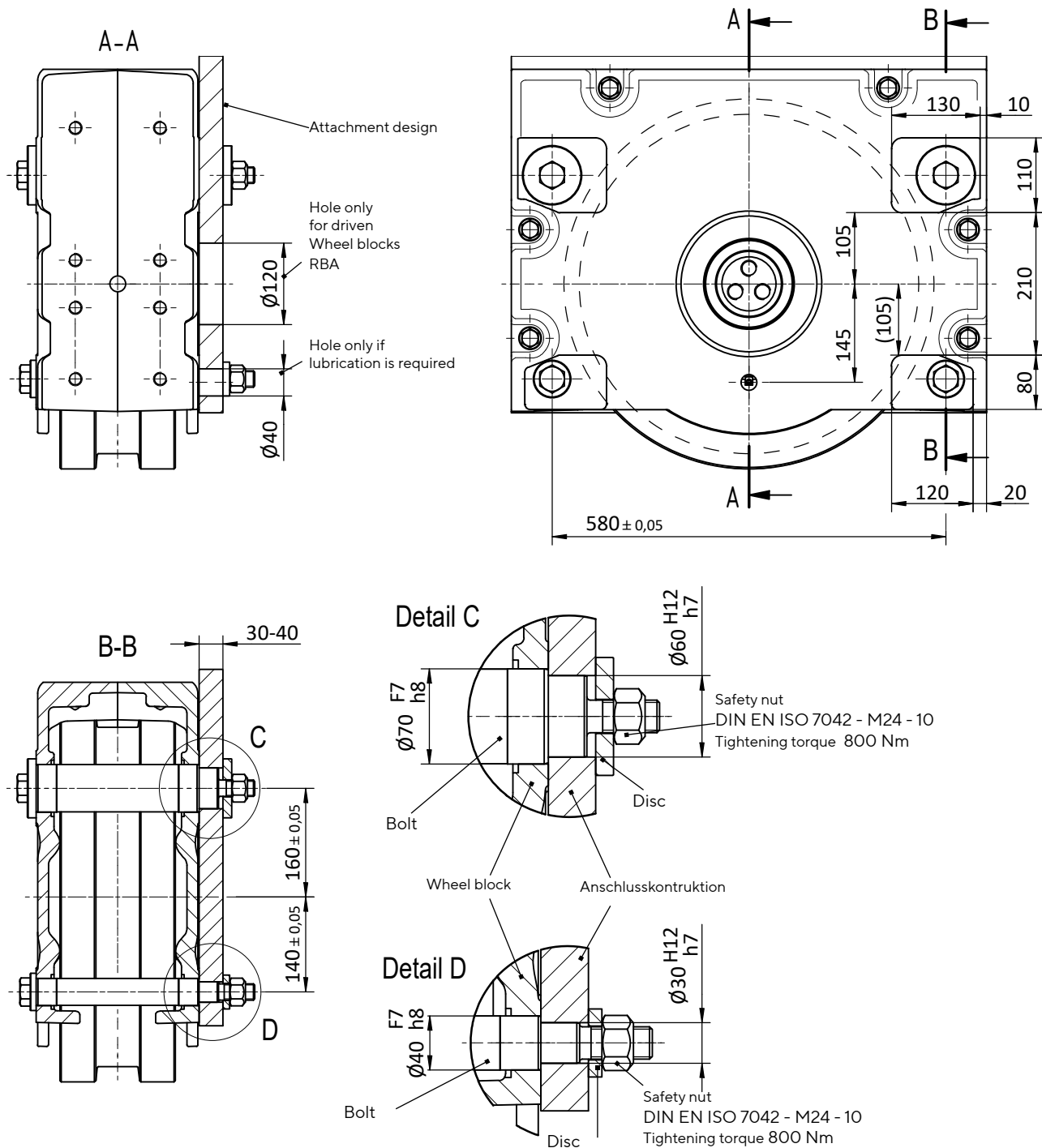
Connection options

## Side connection WA 500

Lateral connection option for low construction designs

1 Set WA 500 comprising of:

- 2 Bolts  $\varnothing 70/60$
- 2 Discs  $\varnothing 25/87$
- 2 Bolts  $\varnothing 40/30$
- 2 Discs  $\varnothing 25$  DIN 7349
- 4 Safety nuts M 24 DIN EN ISO 7042





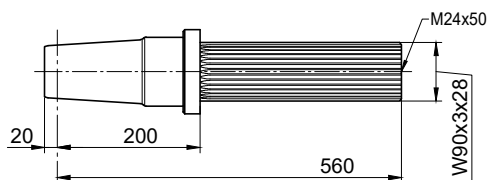
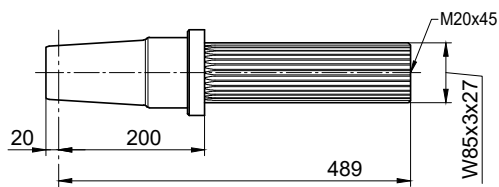
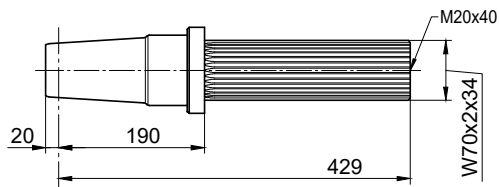
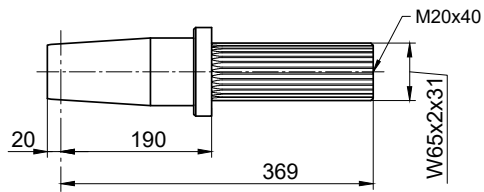


# WHEEL BLOCK RB 500

Drive shafts suitable for slip-on gear mechanisms from other manufacturers on request.

## Single drive unit

Drive shaft suitable for slip-on gear mechanism with splined-shaft profile in accordance with DIN 5480



Slip-on gear mechanism		
Model	Manufacturer	Splined-shaft profile in acc. with DIN 5480

FV 87 / KV 87	SEW	W65 x 2 x 31
SPZT / SKZT 56..	PREMIUM STEPHAN	
F.A.T / KAT 109	SIEMENS	

FV 97 / KV 97	SEW	W70 x 2 x 34
SK 6282 EA	NORD	
SPZT / SKZT 66..	PREMIUM STEPHAN	
F.A.T / KAT 129	SIEMENS	

FV 107 / KV 107	SEW	W85 x 3 x 27
SK 7282 EA	NORD	
SPZT / SKZT 76..	PREMIUM STEPHAN	
F.A.T / KAT 149	SIEMENS	

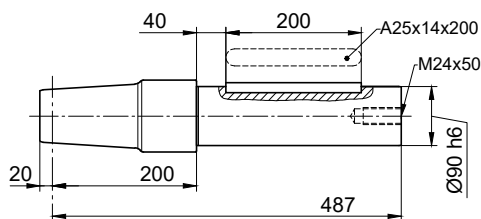
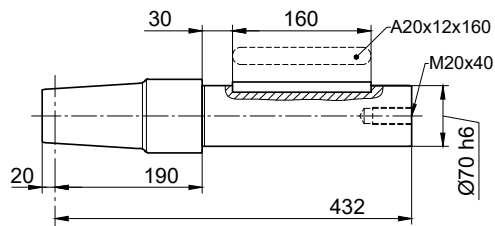
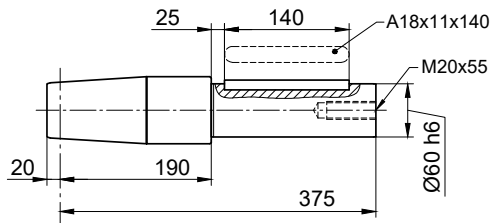
F.A.T / KAT 169	SIEMENS	W90 x 3 x 28
-----------------	---------	--------------

# WHEEL BLOCK RB 500

Drive shafts suitable for slip-on gear mechanisms from other manufacturers on request.

## Single drive unit

Drive shaft suitable for slip-on gear mechanism with feather key connection in accordance with DIN 6885



Slip-on gear mechanism		
Model	Manufacturer	Shaft end

FA / KA / SA 87	SEW	Ø60
SK 5282 AB	NORD	
FDA 109 (FDA 108) FZA 109 (FZA 108) KA 109 (KA 108)	SIEMENS (FLENDER)	
GFL / GKS 09	LENZE	
K 7	STÖBER	
SPZH 56.. SKZH 56..	PREMIUM STEPHAN	

FA / KA / SA 97	SEW	Ø70
SK 6282 AB	NORD	
FDA 129 (FDA 128) FZA 129 (FZA 128) KA 129 (KA 128)	SIEMENS (FLENDER)	
SPZH 66.. SKZH 66..	PREMIUM STEPHAN	

FA / KA 107	SEW	Ø90
FDA 149 (FDA 148) FZA 149 (FZA 148) KA 149 (KA 148)	SIEMENS (FLENDER)	
SPZH 77.. SKZH 77..	PREMIUM STEPHAN	

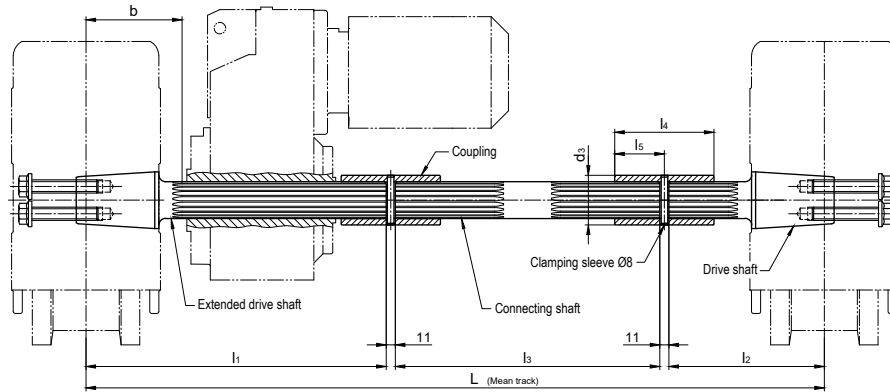
# WHEEL BLOCK RB 500

Drive shafts suitable for slip-on gear mechanisms from other manufacturers on request.

## Central drive unit

Both wheel blocks are driven with only one gear motor

(Splined-shaft profile, feather key connection and shrink disc attachment)



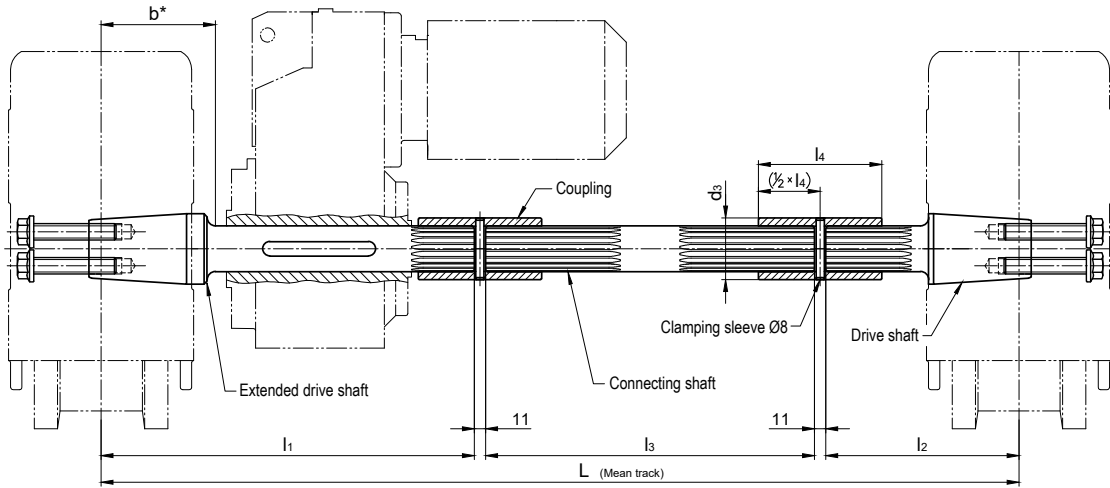
Model	Manufacturer	Splined-shaft-profile DIN 5480	L	l1	l2	l3	Centre RB to gearing b	l4	l5	d3	Clamping sleeve DIN 1481
AF 10 AUK 60	DEMAG	W65 x 2 x 31	For ordering, please provide	510	218	Dimensi- on L minus 750	185	125	62.5	80	8 x 80
FV 87 KV 87	SEW										
SK 9042.1AZE	NORD										
SPZT 56.. SKZT 56..	PREMIUM STEPHAN										
F.AT 109 KAT 109	SIEMENS										
FV 97 KV 97	SEW	W70 x 2 x 34		580	218	Dimensi- on L minus 820	185	135	67.5	90	8 x 90
SK 6282EA SK 9052.1AZE	NORD										
F.AT 108B KAT 108	SIEMENS (FLENDER)										
SPZT 66.. SKZT 66..	PREMIUM STEPHAN										
F.AT 129 KAT 129	SIEMENS										
FV 107 KV 107	SEW	W85 x 3 x 27		650	228	Dimensi- on L minus 900	195	160	80	110	8 x 110
SK 7282 EA SK 9072.1AZE	NORD										
F.AT 108B KAT 108	SIEMENS										
SPZT 77.. SKZT 77..	PRMIUM STEPHAN										
F.AT 149 KAT 149	SIEMENS										
F.AT 169 KAT 169	SIEMENS	W90 x 3 x 28	710	238	L minus 970	200	170	85	115	8 x 115	

# WHEEL BLOCK RB 500

Drive shafts suitable for slip-on gear mechanisms from other manufacturers on request.

## Central drive unit

Both wheel blocks are driven with only one gear motor  
(Splined-shaft profile, feather key connection and shrink disc attachment)



For gearboxes with hollow shaft and feather key connection in acc. with DIN 6885

Suitable for gearboxes with hollow shaft		L	I1	I2	I3	b* without gearbox stop	Feather key DIN 6885	Coupling Internal gearing/ d3 x 14
Inner-Ø	Length							
Ø60	≤ 280 <sup>1)</sup> ≤ 250 <sup>2)</sup>	For ordering, please provide	500	213	Dimension L minus 735	160	A 18 x 11 x 140	N60 x 2 x 28 Ø75 x 125
Ø70	≤ 350 <sup>1)</sup> ≤ 320 <sup>2)</sup>		600	218	Dimension L minus 840	160	A 20 x 12 x 180	N70 x 2 x 34 Ø90 x 135
Ø80	≤ 380 <sup>1)</sup> ≤ 350 <sup>2)</sup>		625	228	Dimension L minus 875	160	A 22 x 14 x 180	N75 x 3 x 24 Ø95 x 145
Ø90	≤ 410 <sup>1)</sup> ≤ 380 <sup>2)</sup>		650	238	Dimension L minus 910	170	A 25 x 14 x 200	N90 x 3 x 28 Ø115 x 170

\* Drive shafts without gearbox stop !

Dimension b = Smallest possible distance from the centre of the wheel block to the hollow drive shaft

1) at smallest possible distance of the gearbox (b)

2) at distance of the gearbox = 190 mm

Drive shafts with gearbox stop on request.

Suitable for gearboxes of the following manufacturers:

Siemens Motox (Flender), Bauer (Danfoss), KEB, Lenze, Nord, PREMIUM STEPHAN, SEW, Siemens, Stöber, Demag

Et.al. suitable type designations, refer to the single drive unit.